



# Product Catalogue

[www.nufins.com](http://www.nufins.com)

## About Us

Since being founded in 1966, Nufins has evolved into a manufacturer of specialist construction products with a key focus on civil engineering, construction, structural repair and coatings products which are used worldwide.

Our long established concreting chemicals range conforms to industry standards for application and performance. All products manufactured for use in the repair and protection of concrete structures are tested in accordance with BS EN 1504 and carry the CE marking. Our wide range of protective coatings and industrial flooring systems enable us to specify durable solutions for commercial and industrial projects.

The Nufins brand is synonymous with innovation, bespoke product development and high quality manufacturing under the ISO 9001 Quality Management Scheme, thus providing Nufins' customers with confidence in the quality and reliability of our specialist product range.



## Contents

	Page	
Services	4	
Think Nufins	5	
Group 1: <b>Concreting Chemicals</b>	6 - 9	●
Group 2: <b>Concrete Repair &amp; Technical Mortars</b>	10 - 14	●
Group 3: <b>Concrete Protection</b>	15 - 17	●
Group 4: <b>Structural Grouting &amp; Anchoring</b>	18 - 21	●
Group 5: <b>Bedding Mortars &amp; Streetscape</b>	22 - 24	●
Group 6: <b>Joint Sealants &amp; Joint Fillers</b>	25 - 27	●
Group 7: <b>Industrial Flooring</b>	28 - 30	●
Group 8: <b>High Friction Surfacing &amp; Waterproof Coatings</b>	31 - 33	●
Group 9: <b>Leak Sealing &amp; Resin Injection</b>	34 - 36	●
Group 10: <b>Adhesives &amp; Cleaning</b>	37 - 39	●
Group 11: <b>Accessories</b>	40 - 41	●
Index	42	
Estimating Guides & Conversion Table	43	

# Services

We are passionate about customer care, as we know it surrounds business success. Our primary goal is to ensure Nufins products are specifically matched to your project and that you receive expert technical support, before, during and after installation.



## CPD SEMINARS

Nufins offer a comprehensive range of Professional Development Seminars suitable for Engineers, Contractors and other civil engineering and construction individuals. In line with industry and professional body guidelines, these seminars can be delivered at your offices or at Nufins training centre.



## MANUFACTURING

Enjoying an excellent reputation within the industry for quality products, excellent value and exemplary customer service, Nufins' facility operates Zone 1 manufacturing, processing bitumen, epoxy, polyurethane and acrylic resins, together with aggregate and powder blending.

Through our fully accredited and internationally recognised Quality Management System, we provide full product traceability and constantly monitor our processes to ensure that we offer all customers the highest levels of service.



## LABORATORY & QUALITY CONTROL

Laboratory facilities have UKAS accredited test equipment, including compressive, tensile and flexural test equipment along with a temperature controlled chamber with a range of -20°C to 60°C.

Our regularly audited Quality Management Systems include QC testing procedures for every batch of product; this allows us to check product compliance with the suite of TDS, SDS and DoP and enables us to provide batch-specific Certificates of Conformity and Certificates of Analysis, which are available on request.



## TECHNICAL & SITE SUPPORT

Our Technical Team are available to answer your questions online or over the telephone and to support you with your project, by providing expert guidance and advice on site. With an unrivaled level of industry experience, stretching over 50 years, we will recommend and specify the correct product for your application.

Supporting you on site is what we do best, and for that reason we have maintained excellent relationships with our customers for many years. Whether you require a site visit to determine the most suitable Nufins product for your particular application or would like us to ensure that our products are being used correctly – we're here to help.

**Call +44(0)191 416 8360 for more information**

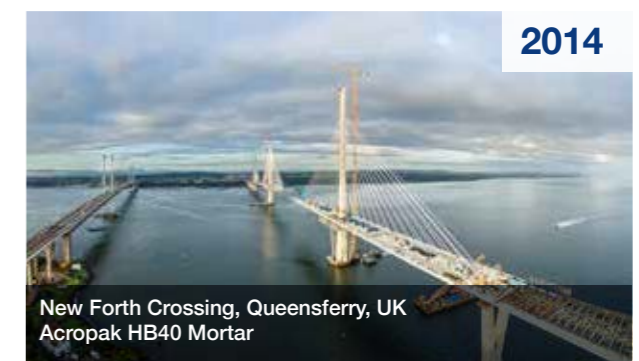
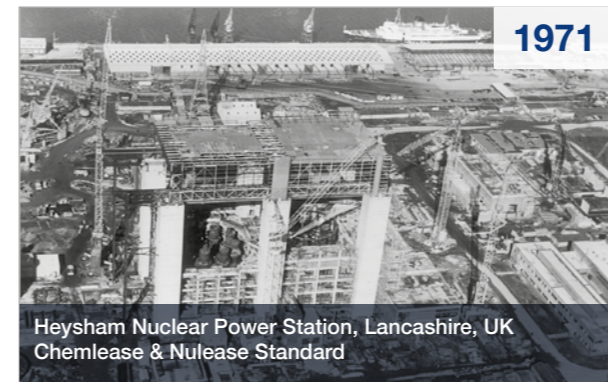
# Trusted expertise for over 50 years!



Nufins have over 50 years experience in the manufacture of specialist construction products, supported by ISO 9001 accreditation. During this period Nufins have been associated nationally and internationally with many prestigious projects including industrial, commercial, retail parks, ports, airfields, highways structures, car parks, water treatment plants and power stations.

Whilst the construction industry's demands and practices have developed and changed in recent decades, the reliability and technical performance of Nufins product range has remained as good as ever, providing solutions for your projects.

## Product Evolution



# Group 1 Concreting Chemicals

Pages 6 - 9

A range of formwork varnish, release agents, curing compounds and surface retarders, providing excellent protection and high quality concrete finishes.



## NULEASE STANDARD

Our original FORMWORK VARNISH, used for enabling clean striking and for achieving high quality finishes. Seals and protects formwork where the criterion is for multiple use. Ideal for precast yards or site applications where positive or negative profile details are required.

Pack Size

5 L



Coverage Yield 7 – 9 m<sup>2</sup> Per Litre

## FORMFIL

FORMWORK REPAIR PASTE designed to produce a fast setting compound which is resistant to impact, abrasion, oil, water and concrete alkalis.

Pack Size

1.5 Kg 7 Kg



Coverage Yield 0.8 Litre & 3.9 Litre

## FORMSTRIKE MRO

Mould RELEASE AGENT based on neat oil with surfactant, suitable for a wide range of formwork materials. Complies with BCA Category 2.

Pack Size

20 L 210 L 1000 L



Coverage Yield 15 - 30 m<sup>2</sup> per Litre

## NULEASE MATT

FORMWORK VARNISH with greater grain filling properties, for superior quality concrete finishes and reduces crazing or hydration staining.

Pack Size

5 L



Coverage Yield 7 – 9 m<sup>2</sup> Per Litre

## CHEMLEASE

Concrete CHEMICAL RELEASE AGENT for optimum release and producing a high quality finish from all types of formwork. Complies with BCA Category 5.

Pack Size

20 L 210 L 1000 L



Coverage Yield 20 - 60 m<sup>2</sup> per Litre

## FORMSTRIKE WB

A blend of BIODEGRADABLE OILS emulsified in water. Designed for precast yards or site based applications, where the need for a material which provides low impact in sensitive situations, including waterways or coastal works.

Pack Size

25 L 210 L 1000 L



Coverage Yield 25 - 45 m<sup>2</sup> per Litre

## NULEASE WB

WATER BASED acrylic SEALER, characterised by its low odour, rapid drying and hard wearing properties. Protects formwork and provides low environmental impact.

Pack Size

5 L



Coverage Yield 7 – 9 m<sup>2</sup> Per Litre



NULEASE STANDARD



CHEMLEASE

For more information call +44(0)191 416 8360 or visit [www.nufins.com](http://www.nufins.com)

Designed for low environmental impact

## CHEMCURE S



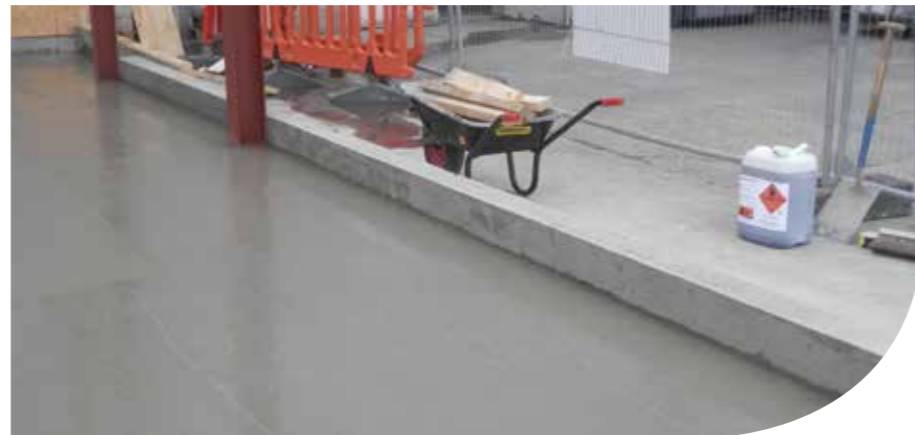
CONCRETE CURING COMPOUND. Aqueous solution of metallic silicates which when applied to fresh concrete forms a micro crystalline seal in the pores reducing evaporation. Compatible with Silane and other surface treatments. Also available with fugitive dye. **VOC Free** WRAS approved product

Pack Size

20 L 210 L



Coverage Yield 5.5 - 6 m<sup>2</sup> per Litre



## CHEMCURE R90

## CHEMCURE R90

Shrinkage associated with hairline cracking and crazing is greatly reduced in vertical and horizontal applications with this CURING MEMBRANE. Curing efficiency index >90% when tested to BS7542, thus complying with ASTM C309.66

Pack Size

20 L 210 L 1000 L

Coverage Yield 5.5 - 6 m<sup>2</sup> Per Litre

## CHEMCURE R90 ALUMINISED

High efficiency CURING MEMBRANE with the addition of ALUMINIUM FLAKE, where the requirement for maximum solar reflection is of high importance. Complies with ASTM C309.66, Highway Works Clause 1027 and Airfield Specification 033 Clause 3.10.1

Pack Size

20 L 210 L 1000 L

Coverage Yield 5.5 - 6 m<sup>2</sup> Litre



## CURECOTE SUPER

Highly efficient non degradable solvent based acrylic SEALER and CURING MEMBRANE, which after appraisal, may be subsequently over-coated. Curing efficiency >80%.

Complies with EN1504-2

Pack Size

20 L 210 L



Coverage Yield 5 - 6 m<sup>2</sup> Per Litre



## AQUATARD FWR



Water based BRUSH-APPLIED formwork PASTE concrete retarder, designed to produce an exposed aggregate finish, thus providing an excellent key for subsequent concrete pours or surface treatments. Suitable for water treatment works, coastal and fresh water projects. Biodegradable, harmless to flora & fauna, non-flammable and **VOC free**.

Pack Size

25 L



Coverage Yield 6 - 10 m<sup>2</sup> Per Litre



## CURECOTE SUPER

## AQUATARD TF



Water based SPRAY-APPLIED LIQUID retarder, designed to expose aggregate on horizontal surfaces. Suitable for water treatment works, coastal and fresh water projects. Biodegradable, harmless to flora & fauna, non-flammable and **VOC free**.

Pack Size

25 L 210 L



Coverage Yield 3 m<sup>2</sup> Per Litre

# Product Focus

## CHEMCURE R90 & CHEMCURE R90 ALUMINISED

High Efficiency, Concrete Curing Membranes. Improves Quality & Strength



For more information call +44(0)191 416 8360 or visit [www.nufins.com](http://www.nufins.com)

### System Benefits

- Spray-applied; avoids hessian and plastic sheeting
- Labour saving method; single application only
- Effective curing; shrinkage & cracking risk greatly reduced
- Reduces evaporation rate; concrete achieves maximum hydration, strength, durability and surface hardness
- Designed to gradually disintegrate over time

### Applications

- Airport runways & taxiways
- Concrete Roads
- Ports & hardstandings

### Description

When applied to freshly placed concrete or polymer repair mortars, shrinkage associated with hairline cracking and crazing is greatly reduced. Forms a curing membrane efficiency index >90% when tested to BS7542. Available with aluminium flake, to provide maximum solar reflection.

### Standard Compliance

ASTM C309.66  
Department for Transport Specification for Highway Works Clause 1027  
MoD DIO Specification 033 Clause 3.10.1 for Airfields  
Independent test reports available upon request



For more information call +44(0)191 416 8360 or visit [www.nufins.com](http://www.nufins.com)

Designed for low environmental impact

# Group 2 Concrete Repair & Technical Mortars

Pages 10 - 14

A range of high quality, polymer modified and resinous mortars, designed for undertaking **Concrete Repair and Protection**, in accordance with **EN1504**. Suitable for heavy duty industrial applications and repair of highway structures.



## SPRAYCEM 301

POLYMER MODIFIED SPRAY APPLIED MORTAR. Spraycem 301 has been designed for machine applications using the dry process and is particularly suitable on large repairs to reinforced concrete structures which have been damaged due to reinforcement corrosion or frost attack. Complies with BD27/86 Compressive strength 55 - 65MPa **Complies with EN1504-3 R3**

Pack Size

25 Kg



Coverage Yield 84 x 25Kg bags per m<sup>3</sup> **CE**

## NUCEM MORTAR

Prepacked CEMENTITIOUS MORTAR for the repair of sections between 10mm - 50mm mainly in the horizontal plane. Guaranteed low W/C ratio. Complies with the requirements of HA specification BD27/86 Clause 6. **Complies with EN1504-3 R4**

Pack Size

27.5Kg



Coverage Yield 13 Litres **CE**

## NUCEM EMULSION PRIMER

Single Pack ACRYLIC, READY-TO-USE PRIMER, for application with Nucem or Acropak products or as a general purpose primer, where good bond strength is required.

Pack Size

5 L 25 L



Coverage Yield 4 - 8 m<sup>2</sup> per Litre

## ACROPAK HB40 MORTAR

HIGH STRENGTH >45MPa MEDIUM BUILD LIGHTWEIGHT FIBRE REINFORCED MORTAR. Polymer modified cementitious mortar which requires the addition of clean water. The product is characterised by its excellent bond strength and high abrasion resistance, making it ideal for patching or rendering; up to 50mm on vertical surfaces and up to 30mm overhead. Complies with HA specification BD 27/86 Clause 6. **Complies with EN1504-3 R3**

Pack Size

22 Kg



Coverage Yield 14 Litres **CE**

## NUCEM CONCRETE

Similar to Nucem Mortar but containing a large granotype aggregate FOR SECTIONS GREATER THAN 20mm. Complies with the HA specification BD27/86 Clause 6. **Complies with EN1504-3 R4**

Pack Size

27.5Kg



Coverage Yield 12 Litres **CE**



## DECK REPAIR RAPID

For more information call +44(0)191 416 8360 or visit [www.nufins.com](http://www.nufins.com)

Designed for low environmental impact

## NUCEM HB MORTAR

HIGH BUILD LIGHTWEIGHT FIBRE REINFORCED MORTAR designed for the structural repair and restoration of spalled or damaged concrete in the inverted and vertical plane. For depths up to 100mm vertical and 70mm inverted, with excellent bond strength and waterproof properties. HA specification BD 27/86 Clause 6. **Complies with EN1504-3 R3**

Pack Size

20 Kg



Coverage Yield 14 Litres **CE**

## NUCEM PRIMER

Water dispersed CEMENTITIOUS EPOXY PRIMER TACK COAT for use with Acropak HB40 Mortar, Nucem HB Mortar, Nucem Mortar and Nucem Concrete. Also recommended for use when bonding new concrete to existing concrete, to ensure high interface bond strength.

Pack Size

1 Kg 5 Kg



Coverage Yield 3 - 6 m<sup>2</sup> per Kg

## DECK REPAIR RAPID

POLYMER MODIFIED CEMENTITIOUS CONCRETE REPAIR MORTAR characterised by its high early strength development and rapid moisture loss. The material has been designed to comply with the requirements of the HA standard BD27/86 Clause 6 and is an ideal material for the repair of bridge decks and suspended slabs prior to waterproofing. **Complies with EN1504-3 R4**

Pack Size

25 Kg



Coverage Yield 12.5 Litres **CE**

### NUFIX SBR



BONDING & WATERPROOFING ADDITIVE. Styrene butadiene rubber latex designed to upgrade compressive and bonding strengths, as well as the waterproof properties of cementitious renders, screeds, mortars and concretes. Solids content 48%. Mix designs produce high quality shrinkage compensated mortars, typically yielding strengths >40MPa

Pack Size



Coverage Yield Refer to TDS

### NUPATCH MORTAR

FAST SETTING REPAIR MORTAR. A pre-packed polymer modified, fast setting, fibre reinforced cementitious mortar designed to provide high early compressive strength development even under adverse conditions. Contains a specially selected latex bonding and waterproofing gauging liquid. >10mm Compressive strength 55MPa **EN1504 Part 3 Class R3**

Pack Size



Coverage Yield 11 Litres

### NUPATCH COSMETIC GREY / WHITE / FSB

Easy to use, finely filled, polymer modified, RAPID SET MORTAR with high adhesion and compressive strengths for permanent repairs. Available in Grey & White versions to enable cosmetic colour-matching. Ideal for MINOR DEFECTS and REPAIRS to in-situ concrete, precast units and kerbs. **VOC free.** **Complies with EN1504-3**

Pack Size



Coverage Yield 3.7 Litres & 12.5 Litres

### NUCEM HD FLOORSCREED

Flow-applied, HEAVY DUTY SELF-SMOOTHING SCREED Laid from 5-25mm in one application; providing a smooth, dust free surface. Wearing surface for industrial and fork lift traffic. **Complies with EN1504-3**

Pack Size



Coverage Yield 14 Litres

### NUPATCH CONCRETE

A pre-packed polymer modified, fibre reinforced cementitious FAST SETTING REPAIR CONCRETE designed to give early strength development even under adverse conditions. Contains a specially selected latex bonding and waterproofing gauging liquid. >20mm Compressive strength 55MPa **EN1504 Part 3 Class R3**

Pack Size



Coverage Yield 11 Litres



### NUCEM SKIMCOAT

### NUCEM HD FLOORSCREED PRIMER

Single pack polymer SEALER / PRIMER for use with NuceM HD Floorscreed. Economical in use and requiring dilution with clean water only.

Pack Size

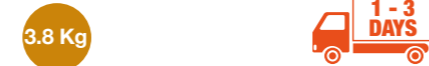


Coverage Yield 50m<sup>2</sup> per Litre

### NUPATCH PRIMER

Two component CEMENTITIOUS PRIMER TACK COAT, designed for use with Nupatch Mortar and Nupatch Concrete.

Pack Size



Coverage Yield 2.5 - 3.5m<sup>2</sup> per Pack

### NUCEM SKIMCOAT

POLYMER MODIFIED CEMENTITIOUS LEVELLING COAT with built-in flexibility and waterproofing properties. Ideal for the treatment of repaired concrete and the surrounding areas to give an overall uniform appearance. **Complies with EN1504-2**

Pack Size



Coverage Yield 6.24m<sup>2</sup> @1mm

### EPICON FS MORTAR

RAPID CURING EPOXY MORTAR. Allows concrete repairs to be carried out with the minimum of disruption. A primer is not required and the mortar will tolerate being applied to a damp substrate. Suitable for heavy duty industrial and highway structures. **Complies with EN1504-3 R4**

Pack Size



Coverage Yield 2.5 Litres & 12.5 Litres

### EPIBEAR

EPOXY BRIDGE BEARING MORTAR. Designed specifically for bridge bearing pad levelling plinths and other load bearing applications. Develops high strengths quickly even at low temperatures. Used in conjunction with Epicon Primer/Tack Coat 'H'. **Complies with EN1504-3 R4**

Pack Size



Coverage Yield 8.3 Litres

### EPIFLEX

Cold applied FLEXIBILISED, EPOXY TRANSITION MORTAR designed for bridge and car park joint transition strips. Excellent adhesion to asphalt, concrete and metal and is moisture tolerant. Ideal for bedding drainage channels, manhole frames and gullies. Provides a fully waterproof solution to transition slots on mezzanine decks. **Complies with EN1504-3**

Pack Size



Coverage Yield 10 Litres

### EPICON MORTAR

GENERAL PURPOSE HIGH STRENGTH EPOXY MORTAR. Extremely versatile and suitable for repairs where characteristics of excellent adhesion, high strength, abrasion and chemical resistance are required. Suitable for large area industrial floor screeds. **Complies with EN1504-3**

Pack Size



Coverage Yield 12.5 Litres

### EPICON TACK COAT H

Two component epoxy bond coat for use with Epicon Mortar, Resiset Corn and EpiBear.

Pack Size



Coverage Yield 3 - 5m<sup>2</sup> per Pack

### EPIKERB

EPOXY BEDDING MORTAR. Enables the fixing of kerbs directly onto concrete or asphalt eliminating the need of a bedding channel or haunching. High bond strength to concrete, metal and asphalt substrates. Ideal for critical situations where permanent fixing is required. **Complies with EN1504-3 R4**

Pack Size



Coverage Yield 9.7 Litres



### EPICON FS MORTAR

### RESISET CORN

High performance, solvent free EPOXIDE SCREED and RENDER designed for application to horizontal and vertical surfaces where properties of abrasion and chemical resistance, as well as high strength, are a requirement. Looks like artstone when installed.

Pack Size



Coverage Yield 2.2m<sup>2</sup> @ 5mm

### CONFIL MORTAR

POLYESTER RESIN MORTAR used for small concrete repairs or as a bedding mortar where quick and rapid strength gain are required. **Complies with EN1504-3 R3**

Pack Size



Coverage Yield 11.8 Litres

For more information call +44(0)191 416 8360 or visit [www.nufins.com](http://www.nufins.com)

Designed for low environmental impact

For more information call +44(0)191 416 8360 or visit [www.nufins.com](http://www.nufins.com)

Designed for low environmental impact

## DECK REPAIR RAPID

**High Strength & Rapid Set Multi-purpose Mortar. Three times stronger than most concrete; durable and weather resistant**



### System Benefits

- Sets in 15 minutes; accepts vehicular traffic in 2 hours
- Rapid strength gain; minimum disruption to site operations
- Shrinkage compensated; low water/cement ratio
- Wearing course for HGV & forklift traffic
- Easy to mix & ideal for cold, damp situations (Winter)
- 3 times stronger than most concrete; durable and weather resistant

### Applications

- Marine structures & dock sides
- Bridge decks and parapets
- Rail network structures & platforms
- Heavy industrial plant floors
- Bus depots & service yards
- Emergency reinstatements to airfields & ports

For more information call +44(0)191 416 8360 or visit [www.nufins.com](http://www.nufins.com)

### Description

Cementitious polymer mortar, characterized by rapid strength development. Ideal for the repair of bridge decks to next day waterproofing or surface treatments. Designed for all deck, yard & floor repair depths 10-150mm.\*

### Standard Compliance

DMRB Highways Specification BD27/86 Clause 6

Conforms to EN1504-3 Strength Class R4

\* For depths > 70mm simply add a 5 litre pail filled with pea gravel per 25Kg bag

Easy to mix with 2.5 to 3.0 litres of water to achieve a pourable self-compacting mortar



## Group 3 Concrete Protection

Pages 15 - 17

High performance anti-carbonation, waterproof, chemically resistant and decorative coatings for walls and soffits





### COVERCRETE



ANTI CARBONATION COATING which also provides a highly durable weather resistant surface. This water based protective coating is available in a range of attractive colours. **Complies with EN1504-2**

Pack Size

5 L 10 L

Coverage Yield 4-8m<sup>2</sup> per Litre

### PROFLEX 'A'



HIGH BUILD, ELASTOMERIC COATING designed to protect concrete from the ingress of rain water and other water-borne pollutants to minimise the possibility of carbonation. Has exceptional crack-bridging properties. Allows substrates to breathe. Available in a range of attractive colours. **Complies with EN1504-2**

Pack Size

5 L 10 L

Coverage Yield 2-5m<sup>2</sup> per Litre

### NUCRYL

CLEAR ANTI CARBONATION COATING. A solvent borne ACRYLIC treatment with excellent resistance properties that protects substrates from aggressive atmospheric contaminants. **Complies with EN1504-2**

Pack Size

5 L

Coverage Yield 6m<sup>2</sup> per Litre

### CLEARGARD

Two component water based, low odour, polyurethane. CLEAR non-sacrificial ANTIGRAFFITI COATING for internal and external application which is non yellowing and weather resistant for the protection of a wide range of surfaces. **Complies with EN1504-2**

Pack Size

5 Kg 20 Kg

Coverage Yield 5m<sup>2</sup> per Kg

### NUPROOF

ALKALI RESISTANT RUBBERISED BITUMINOUS EMULSION with excellent adhesion to concrete and asphalt surfaces. Flexible at low temperatures and resists softening. Ideal as a flexible waterproof membrane on bridge abutments and external walls prior to backfilling. **Complies with EN1504-2**

Pack Size

25 L 200 L

Coverage Yield 2m<sup>2</sup> per Litre

### EPIGARD

Two component resin extended EPOXY COATING, characterised by its inbuilt flexibility, excellent adhesion and resistance to water and a wide range of chemicals. For bridge abutments, harbour walls, chemical bunds and water retaining structures. **Complies with EN1504-2**

Pack Size

5 Kg

Coverage Yield 4 - 6m<sup>2</sup> per Kg

### NUGARD MCI

Single component MIGRATORY CORROSION INHIBITOR. Penetrates concrete and other porous substrates to provide a protective layer to embedded reinforcement. Suitable for bridges, car parks, coastal, commercial, industrial and residential structures. Provides extended service life for concrete affected by carbonation and chloride attack.

Pack Size

20 L 208 L

Coverage Yield 0.27 Litres per m<sup>2</sup>

### STABILISING PRIMER WB



High penetrating ACRYLIC PRIMER for use on friable or very porous concretes prior to the application of Covercrete, or Proflex 'A', or where additional bond strength is required.

Pack Size

5 L

Coverage Yield 5 - 10m<sup>2</sup> per Litre

### NUSIL

CONCRETE & MASONRY WATER PROOFER. Designed to give maximum water repellent properties as well as provide protection from chemical and industrial pollution to a wide range of surfaces. Nusil conforms to BS 3826:1969. **Complies with EN1504-2**

Pack Size

5 L 25 L

Coverage Yield Refer to TDS

For more information call +44(0)191 416 8360 or visit [www.nufins.com](http://www.nufins.com)

Designed for low environmental impact

## Product Focus

### EPIGARD

Heavy duty and flexible waterproof coating. Resistant to abrasion and chemical attack.



For more information call +44(0)191 416 8360 or visit [www.nufins.com](http://www.nufins.com)

#### System Benefits

- Easily installed by brush or roller
- Exceptional inter-coat bond strength
- Low odour & suitable for confined spaces
- Inbuilt flexibility; 30% elongation
- Long term protection
- Resistant to agricultural slurry & sewage effluent
- Resistant to a wide range of chemicals
- Inert & non-hazardous
- Protects against corrosion
- Prevents sulphate attack

#### Applications

- Concrete & Steel structures
- Bearing shelves on highway structures
- Abutments & wing walls
- Coastal defenses, harbour walls & jetties
- Sewage treatment works
- Drainage channels, spillways & culverts
- Oil refineries & chemical works

#### Description

Two component high build solvent free epoxy coating, designed for industrial, chemical, agricultural and sewage treatment plants. Epigard provides long term protection for concrete and steel structures. Suitable for above and below ground applications.

#### Standard Compliance

Conforms to EN1504-2  
Surface protection system for concrete.



# Group 4 Structural Grouting & Anchoring

Pages 18 - 21

High performance, non-shrink cementitious and resinous Structural Grout for repair, bedding and anchoring. Includes a comprehensive range of polyester and epoxy grouts.



## NUGROUT SUPERFLOW

A high strength, FREE FLOWING, shrinkage compensated CEMENTITIOUS GROUT designed to cover the vast majority of grouting applications. For depths of 10 - 80mm  
**Complies with EN1504-3**

Pack Size  
25 Kg



Coverage Yield 12.5 Litres

## NUGROUT HI-SPEC

A high strength, non-shrink, free flowing, CEMENTITIOUS GROUT based on low alkaline portland cement and non-reactive aggregates. Meets the requirements of HA Specification Clause 2601.4. Tested by Aston Material Services. For depths of 5 - 75mm  
**Complies with EN1504-3 & EN15043-6**

Pack Size  
25 Kg



Coverage Yield 13 Litres

## NUGROUT FLOWABLE CONCRETE

FLOWABLE, SELF-COMPACTING MICRO CONCRETE containing non-reactive aggregates and low Na<sub>2</sub>O content. Suitable for use where cathodic protection is in operation. Complies with the requirements of HA Specification BD27/86 Clause 4. Tested by Scientifics Group. For depths of 20 - 500mm (contact Technical Department for depths >300mm)  
**Complies with EN1504-3**

Pack Size  
25 Kg



Coverage Yield 12.7 Litres

## CONFIL GROUT (STANDARD & RAPID)

Polyester FREE FLOWING GROUT designed as a resin anchor for all types of bolts, rebar and fixings in horizontal planes. For sections >3mm to 20mm  
**Complies with EN1504-6**

Pack Size  
2 L 10 L



Coverage Yield 2 Litres & 10 Litres

## CONFIL HP GROUT (STANDARD & RAPID)

Polyester THIXOTROPIC resin ANCHOR GROUT designed for all types of fixing in vertical and inverted situations. Ideal for replacing corroded wall ties. For sections >3mm to 20mm  
**Complies with EN1504-6**

Pack Size  
2 L 10 L



Coverage Yield 2 Litres & 10 Litres



NUGROUT FLOWABLE CONCRETE

## EPICON GROUT RT

EPOXY RAILTRACK GROUT. An economical pourable epoxy grout specifically designed for deep sections and voids including crane and rail track grouting. For depths of >25mm  
**Complies with EN1504-4**

Pack Size  
32 Kg



Coverage Yield 14.5 Litres

## EPICON GROUT L

EPOXY GROUT. Three component free flowing high strength grout. For depths 20 - 100mm.  
**Complies with EN1504-4**

Pack Size  
20 Kg



Coverage Yield 10.1 Litres

## EPICON GROUT M

EPOXY GROUT. A lightly filled pourable grout for free flow gap grouting. For depths 5mm - 40mm.  
**Complies with EN1504-4**

Pack Size  
4.5 Kg 20 Kg



Coverage Yield 2.2 Litres & 10.1 Litres

For more information call +44(0)191 416 8360 or visit [www.nufins.com](http://www.nufins.com)

Designed for low environmental impact

## EPICON GROUT S

EPOXY GROUT. An unfilled grout for small gap and crack widths between 0.25 and 6mm. Also suitable for injection applications. **Complies with EN1504-5**

Pack Size

5.0 Kg



Coverage Yield 4.5 Litres

## EPICON INJECTION RESIN THIXOTROPIC

THIXOTROPIC EPOXY INJECTION RESIN designed to flow freely while under pressure for cracks in walls and soffits. For gaps >0.1mm **Complies with EN1504-5**

Pack Size

0.25 Kg 1 Kg



Coverage Yield 0.2 Litres & 0.9 Litres

## EPICON INJECTION RESIN KIT

A prepacked kit containing EPICON INJECTION RESIN and all ANCILLARY EQUIPMENT to enable small scale crack injection to be carried out by experienced operatives. Available in Low Viscosity or Thixotropic grades. Kit includes 1kg epoxy grout. Will treat 10m x100mm x 1mm cracking



Coverage Yield 0.9 Litres

For more information call +44(0)191 416 8360 or visit [www.nufins.com](http://www.nufins.com)

Designed for low environmental impact



### EPICON GROUT

### EPICON INJECTION RESIN LV

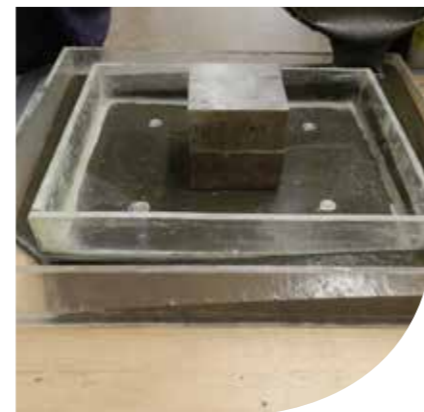
A low viscosity EPOXY INJECTION RESIN for injection into concrete, masonry and brickwork to consolidate the structure and prevent ingress of moisture. For gaps >0.1mm **Complies with EN1505-5**

Pack Size

0.25 Kg 1 Kg



Coverage Yield 0.2 Litres & 0.9 Litres



### EPICON GROUT



### EPICON INJECTION RESIN

# Product Focus



## EPICON GROUT RT

**High Strength, Fast Setting Structural Anchoring & Precision Grout**



Structural Anchoring



For more information call +44(0)191 416 8360 or visit [www.nufins.com](http://www.nufins.com)

### System Benefits

- High compressive, tensile, flexural & bond strengths
- High dynamic load bearing tolerance
- High vibration resistance
- Chemically resistant & waterproof
- Solvent free & non-shrink

### Applications

- Grouting in machinery & plant
- Anchoring holding down bolts & starter bars
- Parapet rail & post fixing
- Under-baseplate & heavy crane rail grouting
- Production of bridge bearing plinths

### Description

High performance non-shrink epoxy grout. Designed for a wide range of fixing applications, where mechanical properties including high early strength gain and high pull out force are required. Free flowing and self-compacting, with controlled exotherm for deep section applications.

### Standard Compliance

EN1504 Part 4 Structural Bonding  
EN1504 Part 6 Anchoring Reinforcing Steel Bars



# Group 5 Bedding Mortars & Streetscape

Pages 22 - 24

High performance and rapid setting cementitious epoxy and polyester mortars and adhesives for industrial and highways applications.



## EPIBEAR

EPOXY BRIDGE BEARING MORTAR. Designed specifically for bridge bearing pad levelling plinths and other load bearing applications. Develops high strengths quickly even at low temperatures. Used in conjunction with Epicon Primer/Tack Coat 'H'. **Complies with EN1504-3 R4**

Pack Size

18 Kg



Coverage Yield 8.3 Litres

## EPIFLEX

Cold applied FLEXIBILISED, EPOXY TRANSITION MORTAR designed for bridge and car park joint transition strips. Excellent adhesion to asphalt, concrete and metal and is moisture tolerant. Ideal for bedding drainage channels, manhole frames and gullies. Provides a fully waterproof solution to transition slots on mezzanine decks. **Complies with EN1504-3**

Pack Size

20 Kg



Coverage Yield 10 Litres

## BLOCKSEAL STANDARD

Solvent borne CLEAR POLYURETHANE SEALER designed to protect concrete surfaces, and stabilise jointing sand between BLOCK PAVING units. **Complies with EN1504-2**

Pack Size

20 L



Coverage Yield 3m<sup>2</sup> per Litre

## EPIKERB

EPOXY BEDDING MORTAR. Enables the fixing of kerbs directly onto concrete or asphalt eliminating the need of a bedding channel or haunching. High bond strength to concrete, metal and asphalt substrates. Ideal for critical situations where permanent fixing is required. **Complies with EN1504-3 R4**

Pack Size

20 Kg



Coverage Yield 9.7 Litres

## NUPATCH BEDDING MORTAR

RAPID SETTING BEDDING MORTAR characterised by its rapid strength development which enables work to be carried out with the minimum of disruption. Ideal for the bedding and raising of manhole frames, fixing of street furniture and as a rapid setting repair mortar. **Complies with HD 27/04 3.11N/mm<sup>2</sup> @ 2 hours. Complies with EN1504-3 R4**

Pack Size

25 Kg



Coverage Yield 10 Litres

## HI SPEC PAVING BEDDING MORTAR

HIGH STRENGTH HYDRAULIC BONDING BEDDING MORTAR. Hi-Spec Paving Bedding Mortar is designed for bedding of concrete, stone and granite elements. The system is suitable for use on pedestrian or vehicular trafficked areas and complies with BS7533. **Complies with EN1504-3 R4**

Pack Size

25 Kg



Coverage Yield 13 Litres

## CONFIL BEDDING MORTAR

RAPID SETTING POLYESTER MORTAR characterised by its rapid strength development which allows work to be carried out with minimum disruption. Ideal for the bedding and raising of manhole frames, fixing of street furniture and as a rapid setting repair mortar. Available in summer and winter grades. **Complies with HD27/04 3.11 20N/mm<sup>2</sup> @ 2 hours**

Pack Size

25 Kg



Coverage Yield 11.2 Litres

## NUPATCH BEDDING MORTAR HA104

RAPID SETTING BEDDING MORTAR characterised by its rapid strength development. **Complies with HA 104/09 6.1 for Bedding of Chamber and Gully Tops. Complies with EN1504-3 R4**

Pack Size

25 Kg



Coverage Yield 12 Litres

## HI SPEC PAVING JOINTING MORTAR

HIGH STRENGTH HYDRAULIC BONDING MORTAR. A pourable cementitious joint mortar typically used for filling joints between concrete, stone and granite elements. The system is suitable for use on pedestrian or vehicular trafficked areas and complies with BS7533. **Complies with EN1504-3 R4**

Pack Size

25 Kg



Coverage Yield 13 Litres

For more information call +44(0)191 416 8360 or visit [www.nufins.com](http://www.nufins.com)

Designed for low environmental impact

## EPIFLEX

**Flexibilised Non Shrink Epoxy Resin  
Transition & Nosing Mortar  
For Ironwork in Slabs & Carriageways**



For more information call +44(0)191 416 8360 or visit [www.nufins.com](http://www.nufins.com)

### Description

EPIFLEX cold applied transition mortar, characterised by inbuilt flexibility and ability to withstand extreme traffic loading. Waterproof and fuel resistant, with excellent adhesion to porous and non-porous materials. Absorbs and distributes dynamic stress loading evenly between asphalt, metal and concrete. May be used with Confil Bedding Mortar rapid set resin bedding mortar when setting manhole covers and channel drains on.

When installed correctly, Nufins' innovative solution to collapsed manhole covers and channel drains provides zero maintenance for 20 years!

### Standard Compliance

EN1504-3 Concrete Repair



### System Benefits

- Resin rich; no primer required
- Tolerant to damp installation conditions
- Pour applied; self-compacting & void free
- Excellent adhesion to concrete, stone, asphalt and metal
- Chemical resistant; resistant to frost, road salts and fuel oil
- Extremely low Modulus of Elasticity in flexure
- Waterproof; ideal for mezzanine decks

### Applications

- Car park and bridge joint transition strips
- Filling slots and joints in concrete, stone and granite elements
- Highways, car park decks, airfields & port facilities
- Production areas and distribution yards



## Group 6 Joint Sealants & Fillers

Pages 25 - 27

A range of joint sealants for use in building and civil engineering structures to accommodate structural and thermal movement



### UNISEAL 150

One part low modulus POLYURETHANE SEALANT for sealing of movement joints in civil and building structures. Available in Black or Grey. **Conforms to EN15651**

**Pack Size**  
 600 ml  
 12 Sachets (7.2 Litres) per box

**Coverage Yield** Gun Grade; refer to TDS

### UNISEAL PRIMER P2

Single component polyurethane primer. Use in conjunction with Uniseal 150, Uniseal 200/90 Coldpour & Uniseal 280.

**Pack Size**  
 1 L  
 1 Litre per 30 Litre Sealant

**Coverage Yield** Approx. 5m<sup>2</sup> per Litre

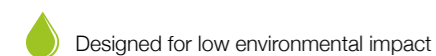
### NUCELL 50

Fine cell, cross-linked, closed cell POLYETHYLENE FOAM CORD. High performance joint filler & backing rod.

**Diameter**

10 mm 
 12 mm 
 15 mm 
 20 mm 
 25 mm 
 30 mm 
 40 mm 
 50 mm

For more information call +44(0)191 416 8360 or visit [www.nufins.com](http://www.nufins.com)



### UNISEAL 200/90 COLDPOUR

High performance FUEL RESISTANT SEALANT specifically developed for sealing contraction and expansion joints in concrete paved areas, roads, bridge decks and airfield runways. Available in Black or Grey. **Conforms to BS5212 & BSEN14188**

**Pack Size**  
 5 L

**Coverage Yield** Pouring Grade; refer to TDS

### EPICON ARG

Two component RAPID CURING, flexibilised Epoxy joint sealant, where rapid reinstatement or SAME DAY TRAFFICKING is essential. Ideal for runways, carriageways, rail crossings, platforms, dock areas, tidal zones, bus stations and shopping malls. FUEL and CHEMICAL RESISTANCE CURES at LOW TEMPERATURES down to 2°C. Available in Black or Grey.

**Pack Size**  
 2.5 Kg  
 2.1 Litres per pack

**Coverage Yield** 2.1 Litres

### NUCELL 200

CLOSED CELL POLYETHYLENE JOINT FILLER for use as an expansion joint filler in blockwork and concrete where a readily compressible low load transfer joint filler is required.

**Sheet Size**

15 x 1000 x 2000 mm  
 20 x 1000 x 2000 mm  
 25 x 1000 x 2000 mm

### UNISEAL 280

A two component POLYURETHANE SEALANT with excellent chemical resistance. Available in Black or Grey.

**Pack Size**  
 2.5 L 
 4 L

**Coverage Yield** Gun Grade | Pouring Grade; refer to TDS

### BITUSEAL & BITUSEAL PRIMER

HOT POURED RUBBER/BITUMEN SEALANT for use as a horizontal sealant in concrete pavements. **Conforms to BS2499.**

**Pack Size**  
 20 Kg

**Coverage Yield** 20 Litres

### NUCELL 500

Potable water grade high density cross-linked, closed cell. POLYETHYLENE SHEET. High performance joint filler. Rotproof and easy to cut. 1000 x 2000mm Sheet

**Sheet Size**

10 x 1000 x 2000 mm  
 15 x 1000 x 2000 mm  
 20 x 1000 x 2000 mm  
 25 x 1000 x 2000 mm

# Product Focus

## UNISEAL 150

### High Performance Low Modulus Polyurethane Sealant



For more information call +44(0)191 416 8360 or visit [www.nufins.com](http://www.nufins.com)

#### System Benefits

- One part therefore easy to apply
- Excellent resistance to weathering
- Permanently flexible
- Excellent acoustic ratings
- Suitable for vertical & horizontal use
- Resistant to sewage effluent
- 25% total joint movement

#### Applications

- Movement joints in concrete, masonry & blockwork
- Perimeter pointing around window & door frames
- Acoustic jointing
- Vertical joints in columns & perimeter walls
- Water treatment works
- Coastal defences, harbour walls & promenades
- Parapet walls on highway structures

#### Description

One part low modulus polyurethane sealant specifically developed for sealing of contraction and expansion joints in civil engineering and building structures.

#### Standard Compliance

Conforms to EN 15651-1

#### Standard Colours

- Black
- Grey



# Group 7 Industrial Flooring

Pages 28 - 30

Hardwearing and heavy duty surface hardeners, dust proofers, sealers, coatings, screeds, toppings and resin flooring products for commercial and industrial applications.



## CONSEAL SILICATE



CONCRETE SURFACE DUSTPROOFER. A concentrated aqueous chemical solution of metallic silicates which when diluted with water deeply impregnates cement bound floors hardening the matrix and rendering them dust free. A simple and economical treatment for warehouses, factory and industrial premises.

Pack Size

15 L 200 L



Coverage Yield 6 - 8m<sup>2</sup> per Litre

## CONSEAL ACRYLIC



CLEAR ACRYLIC WATER BASED SEALER characterised by its hardness, abrasion resistance and water resistance. Suitable for vertical and horizontal concrete surfaces.

Complies with EN1504-2

Pack Size

5 L 25 L



Coverage Yield 6 - 8m<sup>2</sup> per Litre

## CONSEAL URETHANE

CLEAR single pack moisture curing POLYURETHANE SEALER for long term protection of concrete floors. Protects against ingress of dirt, oil, grease and a wide variety of chemicals.

Complies with EN1504-2

Pack Size

5 L 20 L



Coverage Yield 6 - 8m<sup>2</sup> per Litre

## HYDROCOAT

Hard wearing WATER DISPERSED EPOXY RESIN COATING. Solvent free, low odour and high build. Chemical and abrasion resistant.

Available in a range of attractive colours.

Complies with EN1504-2

Pack Size

5 Kg



Coverage Yield 4 - 6m<sup>2</sup> per Kg

## EPISEAL SF

HEAVY DUTY, EPOXY RESIN SEALER and COATING. Solvent free, high build and abrasion resistant. For maximum protection against chemicals. Available in a range of attractive colours and in clear.

Complies with EN1504-2

Pack Size

5 Kg



Coverage Yield 5 - 7m<sup>2</sup> per Kg

## EPISCREED

EPOXIDE PIGMENTED SCREED. Episcreed is a high performance, solvent free epoxide screed for application to concrete floors where properties of high strength and abrasion/chemical resistance are required. Suitable for applications within engineering, chemical plants, plating shops, laboratories, loading bays in breweries, dairies etc.

Pack Size

25 Kg



Coverage Yield 6 - 8m<sup>2</sup> per Kg



## EPIPRIME

SOLVENT FREE EPOXY PRIMER. An epoxy based primer/sealer designed to provide exceptional adhesion for a wide range of resinous flooring systems. Epiprime is solvent free and provides a long duration of tackiness to enhance the strength of the adhesive bond. Epiprime may also be used as a levelling "scratch-coat" when mixed with kiln dried sand.

Pack Size

2.5 Kg



Coverage Yield 5 - 6m<sup>2</sup> per Kg

## EPICON DSP

HIGH PERFORMANCE SURFACE PRIMER. Epicon DSP is a solvent free adhesion promoter for use in difficult conditions where a more conventional primer may not give adequate performance, providing a moisture barrier tack coat to green or damp concrete and as an excellent anti-corrosion protection primer for steel.

Pack Size

5 Kg 25 Kg



Coverage Yield 2 - 3m<sup>2</sup> per Kg

## HYDROCOAT

For more information call +44(0)191 416 8360 or visit [www.nufins.com](http://www.nufins.com)

Designed for low environmental impact

## EPISEAL SF

Hard-wearing solvent free epoxy floor coating for commercial and industrial applications.



For more information call +44(0)191 416 8360 or visit [www.nufins.com](http://www.nufins.com)

### Description

Two component high build epoxy, designed to seal, dustproof and protect concrete floors and walls.

Low odour makes Episeal SF ideal for use in abattoirs, dairies, breweries, bakeries, food preparation and processing areas, where non-taint is essential. Accepts pedestrian & fork lift truck traffic.

Available in Clear, Blue, Tile Red, Light Grey & Mid Grey

### Standard Compliance

Conforms to EN1504-2  
Surface protection system for concrete.

### System Benefits

- Easily installed by brush or roller
- Suitable for walls & floors
- Low odour; suitable for public areas & confined spaces
- Excellent chemical & abrasion resistance
- Dusting eliminated, along with the associated hazards
- Enhanced aesthetics & reduced maintenance costs
- Anti-slip achieved by incorporating quartz sand
- 100% solids content; hardwearing & long lasting

### Applications

- Aircraft hangars, highways, rail & marine
- Animal enclosures, pens & kennels
- Distillers & soft drink manufacturers
- Silos, tanks & water containment
- Production lines & clean rooms
- Warehouses & showrooms
- Washdown booths
- Loading bay platforms
- Basements

**think**  
NUFINS



## Group 8 High Friction Surfacing & Waterproof Coatings

Pages 31 - 33

MMA, PU and epoxy resin body-coats, designed to achieve anti-slip and waterproof surfaces with exceptional durability to carpark decks, footways, balconies and ramps. Suitable for wood, steel and concrete decks. Complimented by cold-applied and rapid curing, linemarking paint.





### TREDSEAL PRIMER

Low viscosity cold-curing 3-component methacrylate resin primer, with rapid curing properties.

Pack Size

10 Kg 50 Kg



Coverage Yield 0.2 - 0.4kg/m<sup>2</sup>

### EPIGRIP

Solvent free RESIN EXTENDED EPOXY COATING which provides a first class ANTI-SKID SURFACE by incorporation of slip resistant aggregate. Ideal for bridges, ramps and walkways. Low odour and suitable for use in confined spaces. (Aggregate not included in pack price). **Complies with EN1504-2**

Pack Size

5 Kg



Coverage Yield 4 m<sup>2</sup> per pack @ 1mm



### URADECK BC

For more information call +44(0)191 416 8360 or visit [www.nufins.com](http://www.nufins.com)

### TREDSEAL RESIN

Tredseal Resin (body coat) is a highly adaptable methacrylate resin surfacing system designed to provide an anti-slip wear resistant waterproof topping for concrete, steel and asphalt. (Aggregate not included in pack price). **Complies with EN1504-2**

Pack Size

25 Kg



Coverage Yield 3.6kg/m<sup>2</sup> @ 2mm per pack



### URADECK BC

Two component POLYURETHANE BODY COAT characterised by its inbuilt flexibility even at low temperatures, with excellent adhesion to concrete, steel and asphalt. Use with aggregates to provide ANTI-SKID SURFACING. (Aggregate not included in pack price). **Complies with EN1504-2**

Pack Size

5 Kg 25 Kg



Coverage Yield 4m<sup>2</sup> @ 1mm / 5kg  
21m<sup>2</sup> @ 1mm / 25kg



### XYLENE

SOLVENT THINNER used for addition to Nucoat UVS, in order to assist with application.

Pack Size

20 L



Coverage Yield As Required

### TREDSEAL FINISH

A methacrylate based surface sealer designed to provide a hard wearing coating for aggregated surfaces. In addition to improving the abrasion resistance of the Tredseal system it also extends its service life and provides a decorative finish. **Complies with EN1504-2**

Pack Size

5 Kg 25 Kg



Coverage Yield 0.5kg/m<sup>2</sup>



### NUCOAT UVS

A POLYASPARTIC FINISH COAT, providing a decorative resin encapsulation for non-slip aggregate. Tough, hard wearing and weather resistant. May be installed as a rapid-curing and protective coating onto concrete or painted surfaces. **Complies with EN1504-2**

Pack Size

5 Kg



Coverage Yield 0.2 - 0.4kg/m<sup>2</sup> over painted surfaces. 0.7kg/m<sup>2</sup> over 0.3-1mm aggregate



### MMA LINEMARK

ACRYLIC LINE MARKING PAINT for application to a wide range of surfaces, offering excellent colour stability and rapid cure. Available in Hazard Yellow and White.

Pack Size

2.5 Kg 5 Kg



Coverage Yield 0.3m<sup>2</sup> - 0.5m<sup>2</sup> per Kg

## Product Focus

# TREDSEAL SYSTEM

## Combined Waterproofing & High Friction Surfacing



Anti-skid Surface



For more information call +44(0)191 416 8360 or visit [www.nufins.com](http://www.nufins.com)

### System Benefits

- Fast set; can be trafficked in two hours
- MMA resin; tolerates application at minus 5°C
- 100% effective waterproof & durable wearing course
- Lightweight alternative to mastic asphalt
- Low viscosity; penetrating crack sealer

### Applications

- Carriageways, bridge decks & multi-storey car parks
- Walkways, footbridges & disabled access ramps
- Typically used on rail platforms
- Warehouses, production zones
- Sealer/decorative coating for concrete floors

### Description

Tredseal is a fast-curing anti-slip Acrylic resin system, designed for application to concrete and asphalt substrates. This tough, flexible and hard wearing anti-slip surfacing is ideal for steel platforms. Easily mixed and installed, with minimal possession time and fast return to service, even at low temperature.

### Standard Compliance

EN1504 – 2 Concrete Surface Protection System  
Condition (PTV) Dry & Wet (water) 36+ low slip potential



# Group 9 Leak Sealing & Resin Injection

Pages 34 - 36

Nufins injection resins are optimally formulated to stop leaks, lift slabs, stabilise soils, fill voids and protect concrete structures.



## PRIME FLEX 900 XLV

Low viscosity, hydrophilic polyurethane resin that reacts with water and expands to form a closed cell, tough watertight flexible foam. Typically injected under pressure to seal actively leaking joints and cracks in concrete structures, including hairline cracks. It can be used with jute fibre (oakum) to seal wide gaps, cracks and defects.

Pack Size  
18.9 L



Coverage Yield As Required

## PRIME FLEX 910

Single-component polyurethane used for soil stabilisation and void filling. It is a hydrophobic, super low viscosity, water-activated polyurethane with variable set time that forms a rock hard, watertight mass. Requires catalyst.

Pack Size  
18.9 L



Coverage Yield As Required

## PRIME FLEX 920

Single-component polyurethane used for void filling, curtain grouting, and sealing high-flow gushing leaks, including wide gaps and cracks in structures not subject to movement. It is a hydrophobic, low viscosity, water-activated polyurethane with variable set time that forms a rigid, rock hard, watertight mass. Requires catalyst.

Pack Size  
18.9 L



Coverage Yield As Required

## PRIME KAT (CATALYST 910 & 920)

Prime Kat is our proprietary catalyst used to adjust the reaction time of Nufins hydrophobic polyurethane injection resins, including Prime Flex 910 & 920.

Pack Size  
0.98 L



Coverage Yield As Required

## KICK FAST (CATALYST 910 & 920)

Kick Fast is the catalyst needed when a very fast set time is required when using Prime Resins' hydrophobic polyurethane injection resins.

Pack Size  
1.97 L



Coverage Yield As Required

## OIL FREE OAKUM

BIODEGRADABLE GUSH CONTROL. Nufins oakum is a fibrous twisted jute rope. It is used in conjunction with our hydrophilic resins to seal leaking joints. Nufins oakum is dry and oil-free to ensure maximum absorption of hydrophilic resin.

Pack Size  
23 Kg



Coverage Yield Approx. 83 litres of hydrophilic resin will saturate a 23kg box of oakum (17 litres for 4.5 kg box)

## VANDEX WATERPLUG

Ready to use rapid setting water-stopping mortar. Stops running water.

Pack Size  
15 Kg



Coverage Yield 7 Litres

## EPICON INJECTION RESIN LV

A low viscosity EPOXY INJECTION RESIN for injection into concrete, masonry and brickwork to consolidate the structure and prevent ingress of moisture. For gaps >0.1mm  
Complies with EN1505-5

Pack Size  
0.25 Kg 1 Kg



Coverage Yield 0.2 Litres & 0.9 Litres

## EPICON INJECTION RESIN THIXOTROPIC

THIXOTROPIC EPOXY INJECTION RESIN designed to flow freely while under pressure for cracks in walls and soffits. For gaps >0.1mm  
Complies with EN1504-5

Pack Size  
0.25 Kg 1 Kg



Coverage Yield 0.2 Litres & 0.9 Litres

For more information call +44(0)191 416 8360 or visit [www.nufins.com](http://www.nufins.com)

## PRIME FLEX 920

Hydrophobic, low viscosity, highly expansive, water activated polyurethane.



For more information call +44(0)191 416 8360 or visit [www.nufins.com](http://www.nufins.com)

### System Benefits

- Controllable reaction times and swell rates
- Single component pump
- Watertight seal
- Consolidates loose soil

### Applications

- Basement leak sealing
- Seawall stabilisation
- Airport runway stabilisation
- Highways, road and bridge stabilisation

### Description

Prime Flex 920 is a single-component, 100% solids polyurethane injection resin used to seal high flow leaks, including wide gaps in concrete, where the structure is not subject to movement. This hydrophobic, low viscosity polyurethane reacts with water and expands to form a closed cell, watertight, rigid foam.

### Standard Compliance

Conforms to EN1504-5 & BS6920



## Group 10 Adhesives & Cleaning

Pages 37 - 39

Epoxy adhesives providing exceptional bond strengths and suitable for a variety of materials, including concrete, stone, metal, plastic and ceramic. Polyester fillers in a range of colours for wood, terrazzo and concrete surfaces. Cleaning agents for Nufins' resinous products.



### BRICKBOND

Two component EPOXY BONDING PASTE, neutral in colour. Suitable for bonding all types of cut bricks for specified angles or shapes. **Complies with EN1504-4**

Pack Size

10 L



Coverage Yield 10m<sup>2</sup> @ 1mm per pack



### TIMBERGRADE

Rapid setting, easy to use two pack WOOD FILLER. The ideal solution for knots, splits, shakes, dents and all surface imperfections, as well as rectification in all types of joinery work. Available in a range of timber shades. Extra tubes of hardener available.

Pack Size

1.5 Kg



Coverage Yield 0.8 Litres



### BRICKBOND

For more information call +44(0)191 416 8360 or visit [www.nufins.com](http://www.nufins.com)

Designed for low environmental impact

### EPIBOND

EPOXY GAP FILLING ADHESIVE. A two component, solvent free epoxide bonding paste, for use where high bond strengths are required. Ideal for bonding cementitious materials, stone and brick-slips as well as non-porous materials such as granite and metal. **Complies with EN1504-4**

Pack Size

5 Kg 10 Kg



Coverage Yield 3.5 Litres & 7 Litres



### NUWASH

A powerful SOLVENT CLEANER used to clean all tools and equipment which have been in contact with resin based materials.

Pack Size

5 L 20 L



Coverage Yield As Required



### BRICKBOND

### EPICON INJECTION RESIN THIXOTROPIC

Two component THIXOTROPIC EPOXY RESIN ADHESIVE - for application by gun or spatula.

Pack Size

0.25 Kg 1 Kg



Coverage Yield - 0.2 Litres & 0.9 Litres



### CHEMCLEAN

ACID CLEANER, ideal for the removal of all cement based contamination and rust from a wide range of surfaces.

Pack Size

5 L 20 L



Coverage Yield As Required

### ECOFLUSH

REUSABLE, BIODEGRADABLE PUMP FLUSH. Eco Flush is a low-toxicity, non-chlorinated, non-flammable solvent formulated for flushing and cleaning Prime Flex polyurethane injection resins out of injection pumps and hoses.

Pack Size

18.9 L

Coverage Yield As Required

## Product Focus

### EPIBOND

**Epoxide Resin Gap Filling Adhesive. Bonding Construction Materials & Permanent Fixings**



Strong Adhesion



For more information call +44(0)191 416 8360 or visit [www.nufins.com](http://www.nufins.com)

#### System Benefits

- Epoxy based adhesive; exceptionally high bond strength
- Simple 1:1 by volume mix ratio; no waste
- Resin rich; no primer required
- Grey in colour; matches concrete
- Thixotropic; for horizontal & vertical applications
- Versatile use; trowel applied or gunnable
- Resistant to a wide range of chemicals
- Waterproof & non-shrink

#### Applications

- Bonding precast units & brick slips
- Bonding aggregates to precast panels
- Fixing paving elements & bricks
- Bonding steel to steel or concrete
- Repairs to cracks & pipe fractures

#### Description

Solvent free, two component bonding paste for use where exceptionally high bond strengths are required. Designed for cementitious materials, stone and brick, as well as non-porous materials such as granite and metal. Epibond may be used for thin bed bonding of paving elements in pedestrian and vehicular trafficked areas.

#### Standard Compliance

EN1504 Part 4 Structural Bonding



# Group 11 Accessories

Pages 40 - 41

Spraying equipment, sealant guns, single use plastic cartridges etc.

## PLASTIC SPRAYERS (5 OR 10 LITRES)

HEAVY DUTY SPRAYERS with brass lance and trigger assembly. Suitable for application of Chemlease and Chemcure products and Topface Retarders. Spares readily available.

## CARTRIDGE GUN (320CC)

Suitable for standard size cartridges.

## CARTRIDGES (320CC)

Suitable for resin injection products. Complete with nozzle and plunger.

## CARTRIDGE GUN (1 LITRE)

LARGE CAPACITY CARTRIDGE GUN, available with spare cartridges. Suitable for injecting Resin Grouts, Epicon ARG and Epibond.

## CARTRIDGES (1 LITRE)

1 LITRE CARTRIDGES for the 1 litre cartridge gun. Complete with nozzle and plunger.

## BARREL GUN T2

Suitable for applying Uniseal 150.

## HELICAL MIXER

80mm diameter SPIRAL STRIKER to fit slow speed drills. Suitable for mixing a wide range of Nufins products.

## GATE PADDLE MIXER


Suitable for mixing Epicon ARG and other Nufins products.

## INJECTION PACKERS (10mm & 13mm)

## FOLLOWER PLATE

## DRUM TAP BRASS

For more information call +44(0)191 416 8360 or visit [www.nufins.com](http://www.nufins.com)

 Designed for low environmental impact



**INDEX**

PRODUCT	PAGE	PRODUCT	PAGE	PRODUCT	PAGE
Acropak HB40 Mortar	11	Epicon Injection Resin LV	20 & 35	Nugrout Hi-Spec	19
Aquatard FWR	8	Epicon Injection Resin Thixo	20, 35 & 38	Nugrout Flowable Concrete	19
Aquatard TF	8	Epicon Tack Coat H	13	Nulease Standard	7
Bituseal & Bituseal Primer	26	Epiflex	13 & 23	Nulease Matt	7
Blockseal Standard	23	Epigard	16	Nulease WB	7
Brickbond	38	Epikerb	13 & 23	Nupatch Bedding Mortar	23
Chemclean	38	Epigrip	32	Nupatch Bedding Mortar HA104	23
Chemcure R90	8	Epiprime	29	Nupatch Concrete	12
Chemcure R90 Aluminised	8	Episcreed	29	Nupatch Cosmetic	12
Chemcure S	8	Episeal SF	29	Nupatch Mortar	12
Chemlease	7	Formfill	7	Nupatch Primer	12
Cleargard	16	Formstrike MRO	7	Nuproof	16
Confil Bedding Mortar	23	Formstrike WB	7	Nusil	16
Confil Grout	19	Hi Spec Paving Bedding Mortar	23	Nuwash	38
Confil Mortar	13	Hi Spec Paving Jointing Mortar	23	Oil Free Oakum	35
Confil HP Grout	19	Hydrocoat	29	Proflex 'A'	16
Conseal Acrylic	29	Kick Fast (Catalyst 910 & 920)	35	Prime Flex 910	35
Conseal Silicate	29	MMA Linemark	32	Prime Flex 920	35
Conseal Urethane	29	Nucell 50	26	Prime Flex 900 XLV	35
Covercrete	16	Nucell 200	26	Prime Kat (Catalyst 910 & 920)	35
Curecote Super	8	Nucell 500	26	Resiset Corn	13
Deck Repair Rapid	11	Nucem Concrete	11	Spraycem 301	11
Ecoflush	38	Nucem Emulsion Primer	11	Stabilising Primer WB	16
Epibear	13 & 23	Nucem HB Mortar	11	Timbergrade	38
Epibond	38	Nucem HD Floorscreed	12	Tredseal Finish	32
Epicon ARG	26	Nucem HD Floorscreed Primer	12	Tredseal Primer	32
Epicon DSP	29	Nucem Mortar	11	Tredseal Resin	32
Epicon Grout M	19	Nucem Primer	11	Uniseal 150	26
Epicon Grout L	19	Nucem Skimcoat	12	Uniseal 280	26
Epicon Grout RT	19	Nucoat UVS	32	Uniseal 200/90 Coldpour	26
Epicon Grout S	20	Nucryl	16	Uniseal Primer P2	26
Epicon FS Mortar	13	Nufix SBR	12	Uradeck BC	32
Epicon Mortar	13	Nugard MCI	16	Vandex Waterplug	35
Epicon Injection Resin Kit	20	Nugrout Superflow	19	Xylene	32

ESTIMATING GUIDE FOR SEALANTS	
Joint Width (mm) x Joint Depth (mm) x Length (LM) = Quantity in Litres.	
1000	
Example:	Joint Width 20mm Joint Depth 10mm Joint Length 20LM
	$\frac{20 \times 10 \times 20}{1000} = 4$ litres
	mm = millimetres LM = Linear Metres

ESTIMATING GUIDE FOR GROUTS	
Volume of grout (cc) required per hole for 100mm bond length. These figures are for guidance only.	
HOLE Dia (mm)	Bar Diameter (mm)
	12 16 20 25 32 38 45 50
16	11 - - - - - - -
20	24 15 - - - - - - -
25	46 35 22 - - - - - - -
32	84* 74 60 39 - - - - - - -
38	113* 99* 78 40 - - - - - - -
45	154* 132* 95 55 - - - - - - -
50	198* 178* 140* 100 58 - - - - - - -
65	291* 251* 196* 151 - - - - - - -
75	395 340* 295* - - - - - - -

\* Confil Grouts are not recommended for use.

CONVERSION TABLE	
Imperial to Metric	To convert multiply by
Cu yards to cu metres	0.7646
Miles to kilometres	1.609
Gallons to litres	4.546
Pounds to grams	453.6
Pounds to kilograms	0.4536
Tons to kilograms	1016.00
Litres to cu metres	0.001
Cu metres to litres	1000
°C to °F	= x 9; ÷ 5; + 32
°F to °C	= - 32; x5; ÷ 9
Inches to centimetres	2.540
Sq inches to sq centimetres	6.452
Cu inches to cu centimetres	16.39
Cu inches to litres	0.01639
Feet to metres	0.3048
Sq feet to sq metres	0.0929
Cu feet to cu metres	0.02832
Yards to metres	0.9144
Sq yards to sq metres	0.8361



HEAD OFFICE  
Kingston House  
3 Walton Road  
Pattinson North  
Washington  
Tyne & Wear  
NE38 8QA  
United Kingdom

T: +44 (0) 191 416 8360

F: +44 (0) 191 415 5966

E: [info@nufins.com](mailto:info@nufins.com)