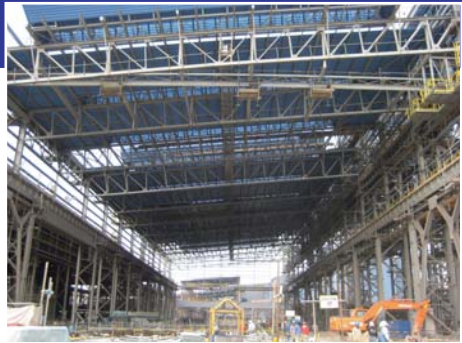


# Bridges



fzeta also provides design drafting and detailing services for the following specialities

- Architectural and Highly Challenging Projects
- Road and Rail Bridges, Viaducts and Train Stations
- Roofs, Stadiums, Warehouses for industrial and civil purposes
- Walkways, Staircases, Decks and Platforms
- Oil&Gas Structures, Process Platforms, Piperacks, Towers
- Ship Loaders and Unloaders for bulk material
- Stackers, Reclaimers, Trippers, Chutes, Hoppers, Storage Bins for bulk material handling
- Transmission Towers
- Lattice Girds, Galleries, Bents for conveyors belts

**DOWCO**  
CONSULTANTS LTD

fzetadowco Ltd  
19 Little Barrow Walk, Lichfield  
WS13 7EP  
Staffordshire  
United Kingdom  
Tel. +44 (0) 7428133093  
info@fzetadowco.com

fzetadowco srl  
Vicolo Cadore 45, San Vendemiano  
IT-31020  
Treviso  
Italy  
Tel. +39 0438 1736922  
info@fzetadowco.com

**fzetaDOWCO**

Workshop Drawings for Bridges and  
Steel Structures of Any Dimension  
and Geometric Complexity



# Who fzeta is

Our Company is a team of confident, skilled modellers and detailers dedicated solely to the sector of steel structures.

We fully understand our client's every need and fulfill their every request.

At fzeta we collaborate with and support our customers in order to achieve excellent results in terms of quality, professionalism, improvements and the optimization of fabrication and erection processes, all within their time schedules.

We are ready for your next job.

Molino di Setta Viaduct - Italy



Water Canal Foot Bridge FB02 - Dubai UAE



## Services provided

- Analysis of Road Project and Deck Structures
- Calculation of Trajectories and Rationalization
- Study of Proposals and Solutions
- Complete 3d BIM Modelling
- GAs for Approval
- Workshop Drawings
- CN, Fabrication and Any List of Materials
- Erection Plans
- Launching and Laying Diagrams
- Welding book
- Fabrication and Erection Support

Lot	Marque	Position	Profil	Qté	Longueur	Material	U.Poids	T.Poids	T.Surf	Description	R
<b>B. 60.0001</b>											
	AME			3		10504.9	31586	287.93			
BT	36700	PL 20*1900		1	11910.5275UR	4636.2	4636	47.92	AME		
BT	36704	PL 40*900		1	11910.5275UR	1832.5	1832	12.66	SEMELE-SUP		
BT	36705	PL 35*900		1	11910.5275UR	1602.3	1602	12.53	SEMELE-INF		
BT	36706	PL 12*145		3	245.5275UR	36.5	91	0.71	PLAT		
BT	36708	PL 12*135		2	245.5275UR	27.7	51	0.67	PLAT		
<b>B. 60.0002</b>											
BT	36700	PL 20*1900		1	11910.5275UR	4636.2	4636	47.92	AME		
BT	36704	PL 40*900		1	11910.5275UR	1832.5	1832	12.66	SEMELE-SUP		
BT	36741	PL 12*190		3	368.5275UR	5.3	96	0.12	PLAT		
BT	36742	PL 10*190		7	600.5275UR	7.8	99	0.21	PLAT		
BT	36758	PL 12*135		2	245.5275UR	27.7	51	0.67	PLAT		
<b>B. 60.0003</b>											
BT	36700	PL 20*1900		1	11910.5275UR	4636.2	4636	47.92	AME		
BT	36707	PL 40*900		1	11910.5275UR	1832.5	1832	12.66	SEMELE-SUP		
BT	36708	PL 35*900		1	11910.5275UR	1602.3	1602	12.53	SEMELE-INF		
BT	36710	PL 40*900		1	11910.5275UR	1832.5	1832	12.66	SEMELE-INF		



- ### Expertise
- Rail bridges
  - Road Bridges and Viaducts
  - Flyovers
  - Overpass Walkways
  - Temporary towers
  - Launching Noses and Retaining Structures

# fzetaDOWCO

Lot	Marque	Position	Profil	Qté	Longueur	Material	U.Poids	T.Poids	T.Surf	Description	R
<b>B. 60.0001</b>											
	AME			3		10504.9	31586	287.93			
BT	36700	PL 20*1900		1	11910.5275UR	4636.2	4636	47.92	AME		
BT	36704	PL 40*900		1	11910.5275UR	1832.5	1832	12.66	SEMELE-SUP		
BT	36705	PL 35*900		1	11910.5275UR	1602.3	1602	12.53	SEMELE-INF		
BT	36706	PL 12*145		3	245.5275UR	36.5	91	0.71	PLAT		
BT	36708	PL 12*135		2	245.5275UR	27.7	51	0.67	PLAT		
<b>B. 60.0002</b>											
BT	36700	PL 20*1900		1	11910.5275UR	4636.2	4636	47.92	AME		
BT	36704	PL 40*900		1	11910.5275UR	1832.5	1832	12.66	SEMELE-SUP		
BT	36741	PL 12*190		3	368.5275UR	5.3	96	0.12	PLAT		
BT	36742	PL 10*190		7	600.5275UR	7.8	99	0.21	PLAT		
BT	36758	PL 12*135		2	245.5275UR	27.7	51	0.67	PLAT		
<b>B. 60.0003</b>											
BT	36700	PL 20*1900		1	11910.5275UR	4636.2	4636	47.92	AME		
BT	36707	PL 40*900		1	11910.5275UR	1832.5	1832	12.66	SEMELE-SUP		
BT	36708	PL 35*900		1	11910.5275UR	1602.3	1602	12.53	SEMELE-INF		
BT	36710	PL 40*900		1	11910.5275UR	1832.5	1832	12.66	SEMELE-INF		

High Quality Drawings according to Any Client's Specifications and Standards

