



GOLDHAWK

Bridge Restoration



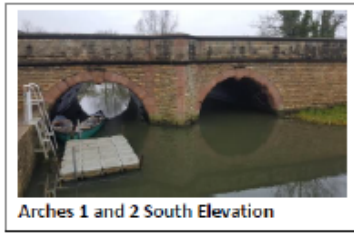
OUNDLE NORTH VIADUCT

MARS INSTALLATION CASE HISTORY -2020

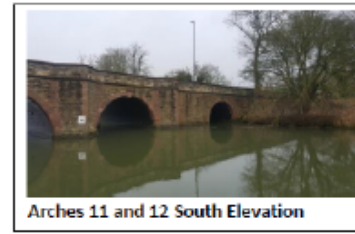
Client: Northampton Highways/WSP/Kier

HISTORIC THIRTEEN ARCH OUNDLE NORTH VIADUCT

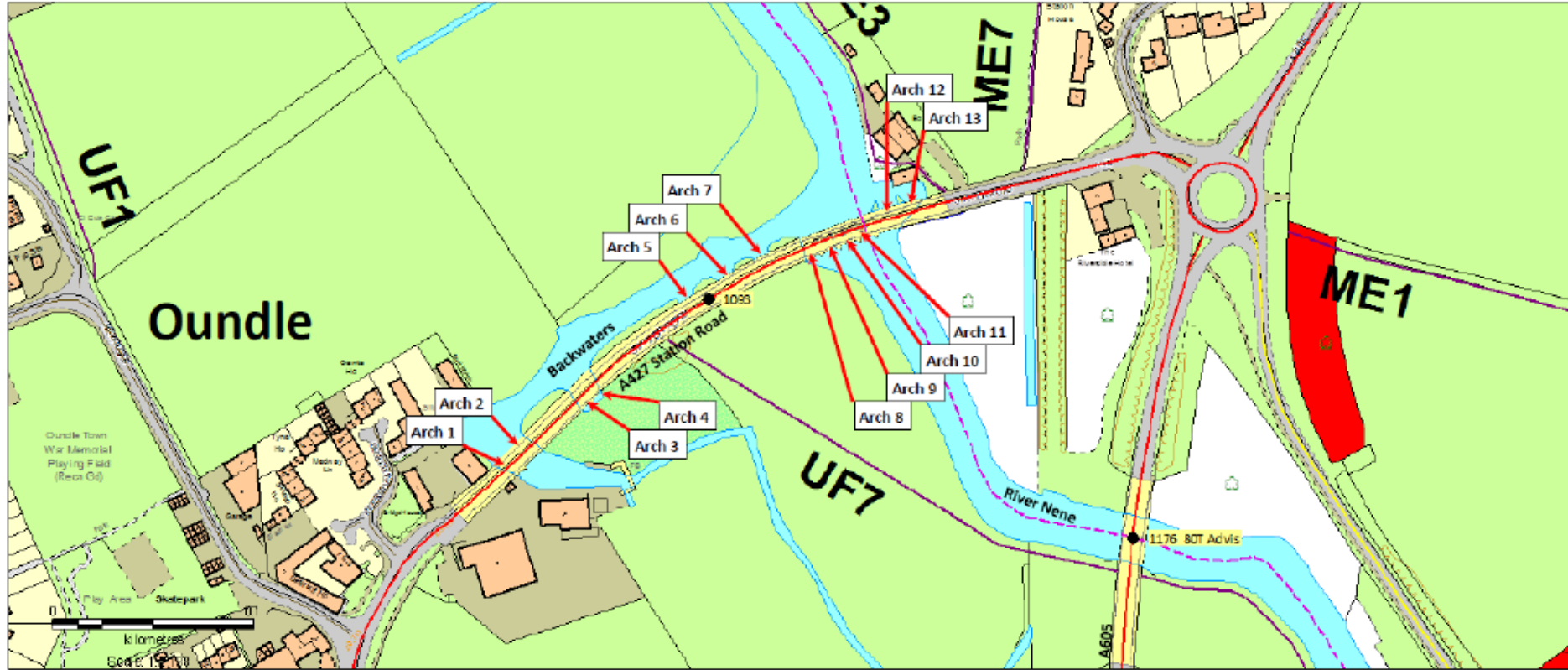




Arches 1 and 2 South Elevation



Arches 11 and 12 South Elevation



Oundle North Bridge – Location of Arches



Arch 3 South Elevation



Arch 4 South Elevation



Arch 5 South Elevation

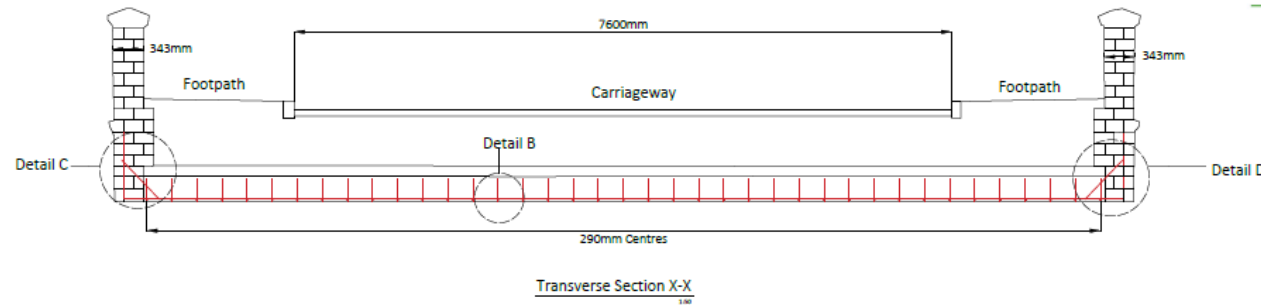
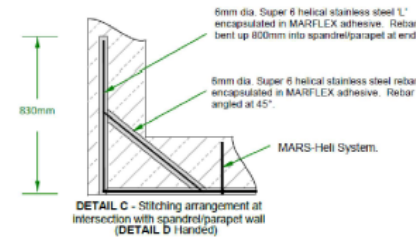
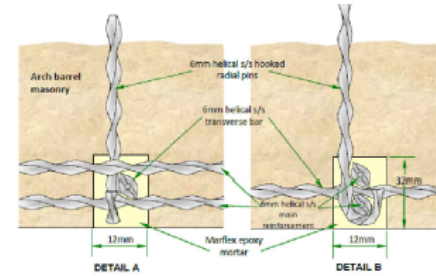
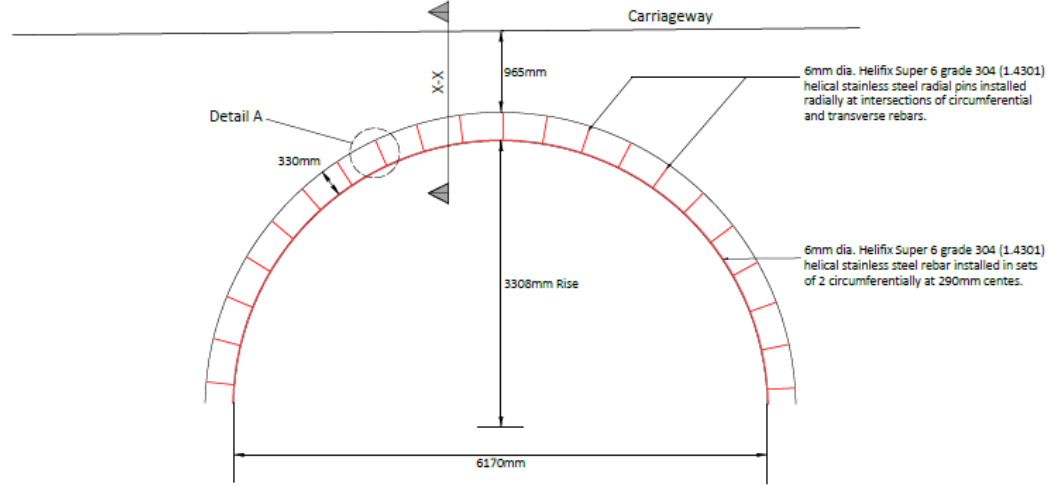
MARS STRENGTHENING DETAIL



GOLDHAWK
Bridge Restoration

Notes:

1. Arches are numbered from West to East
2. Helical stainless steel rebar grade 1.4301 to BS EN 10088-1:2005 (304S31)
3. Rebar encapsulated in MARFLEX epoxy grout
4. Radial ties encapsulated in HellBond Grout



Revision notes:		
Rev.	Date:	Status
AB1	17/12/20	As-Built Issue

Drawing Number:	
GH17-184_Arch11	
Drawn by: DB	Checked by: DB
Client:	
KierWSP	

Project:	
Oundle North Bridge	
Drawing Title:	
Arch 11	

Date:	15/12/2020
Scale @ A1:	1:50
Revision:	AB1

Goldhawk Bridge Restoration Ltd
CanBuild House
Stoke Gardens
Bristol Way
Slough
SL1 3QE
01753516755



MARS
system

Construction Phase



Pontoon access makes for very efficient and environmentally clean operations.

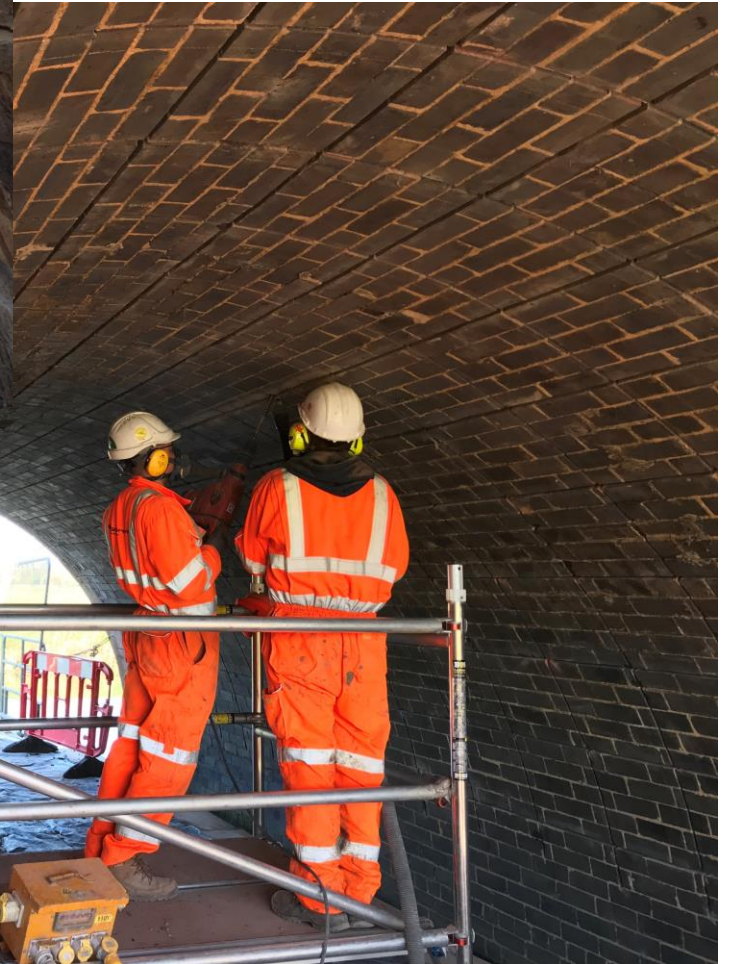




GOLDHAWK
Bridge Restoration



MARS
system

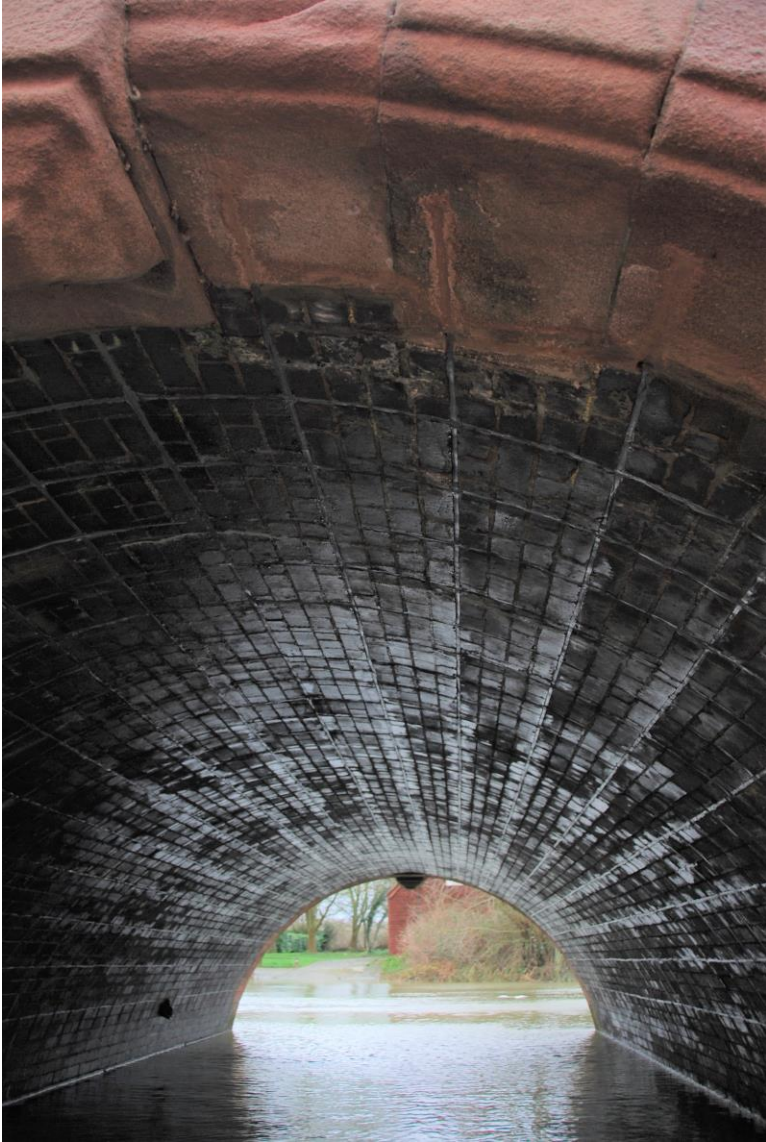


MARFLEXING TEAM



GOLDHAWK
Bridge Restoration







GOLDHAWK
Bridge Restoration







GOLDHAWK
Bridge Restoration



Thank you to our wonderful
team of technicians



GOLDHAWK
Bridge Restoration