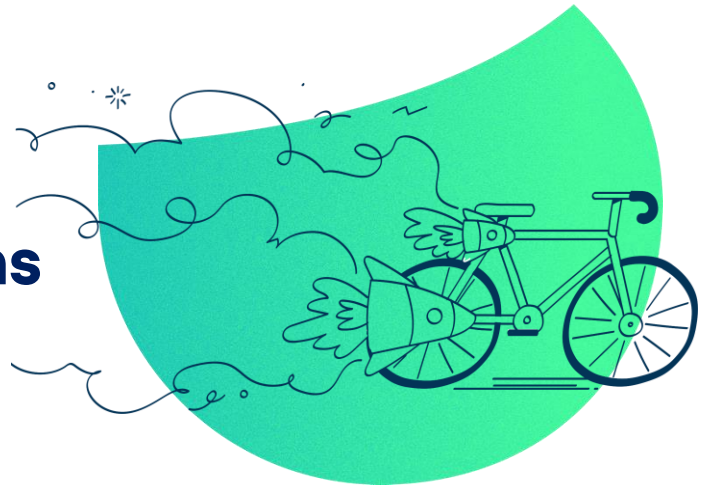


Brightly **CarbonZero**

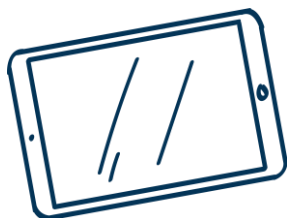
# Know the carbon footprint of your operational functions now and in the future.



80% of local authority infrastructure asset functions and key operational processes are managed in Brightly Confirm. Confirm CarbonZero allows for real-time carbon capture in line with these activities, identifying trends which lead to financial savings as well as reaching your net zero goals.

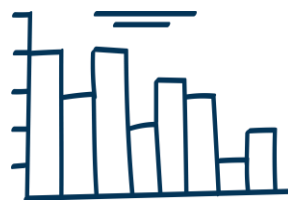
We provide the tools to centrally collect, track, analyse and report on asset and portfolio level metrics. By accurately recording your carbon you create a baseline year by which to measure your year-on-year progress to halving emissions by 2030 and reaching net zero by 2050.

## Benefits



### Carbon Capture made easy!

While carrying out your works management process, we can record the embodied carbon in your operational activity as part of your current day-to-day tasks – real time data collection means no more estimating or retrospectively collating data.



### Double-win - saving carbon can cut costs too

By analysing accurate data, efforts to optimize your activities for carbon savings will lead to financial savings by efficiency improvements.



### Better investment decisions

Brightly provide the data to justify a plan for investment strategies for 2050 – where money is best spent to reduce emissions and achieve Net Zero.



Reporting your carbon footprint is never done, but you need to start today to demonstrate how far you have come.

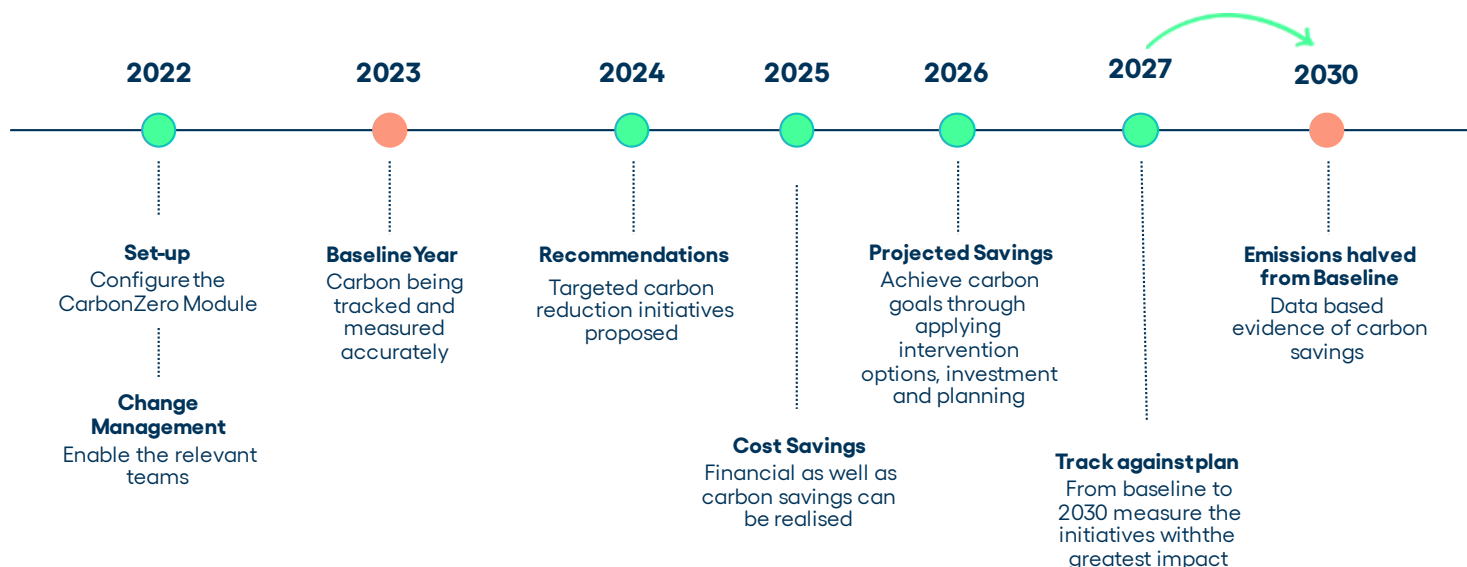
Rondi Allan, SustainableX



## Annual Services Years 1, 2 and beyond

Brightly provide the support year-on-year to extend your carbon footprint data across operational activities and asset type, strengthening your data and capability to fulfil carbon reduction plans.

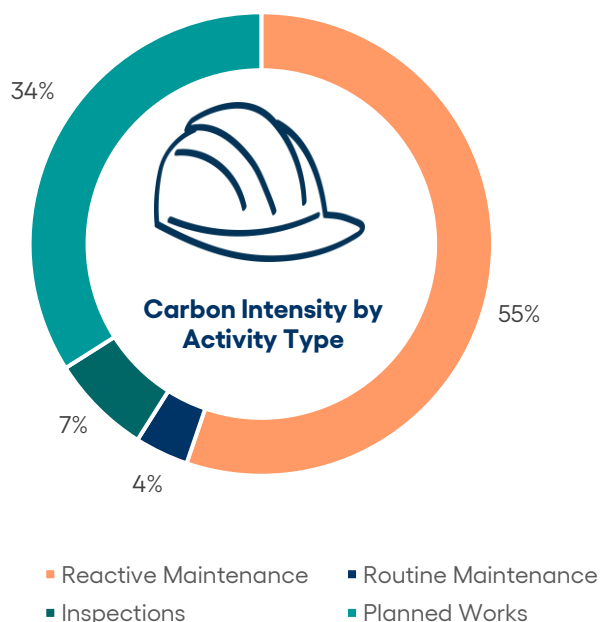
Working with the Carbon Management & Reporting Team, the Service Directors and Asset Owners for a common outcome, we manage the change by training end users, involving them in decision-making and celebrating their successes.



## Baseline Recorded, Results Realised

With carbon capture is in use, a baseline year can be established, and data analysis can begin. Metrics provide benchmarking data of emissions per mile/km and per £ spent.

Over time the baseline year will be used as a comparison to track progress against current year.



## Key Features

**Dashboards** - Data captured onsite by operatives feeds real-time dashboards to track the carbon footprint by activity, job type and location.

**Monthly Progress Meetings** - 1 hour scheduled meeting per month to discuss adoption, changes in configuration and additional reports.

**Quarterly Report** - Quarter on quarter trends, including progress on current targets and planning for next quarters activity.

**Annual Review** - Data trends informing strategic intervention recommendations for your carbon reduction plan provided in an annual improvement plan.

Select key carbon challenges, implement, improve, monitor and repeat – see the results realised in Confirm now and in the future.