



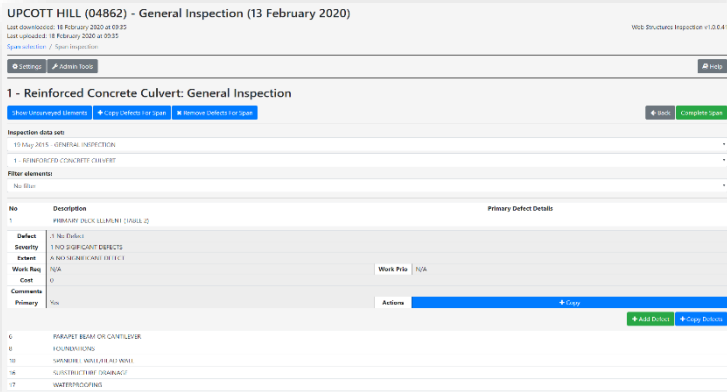
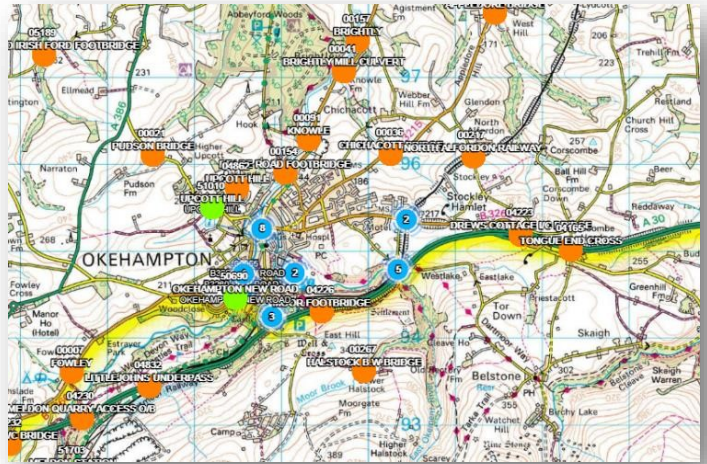
Driving innovation for an ever changing world.

Web Structures Inspection (WSI)

Web Structures Inspection (WSI) is mobile inspection software allowing inspectors to undertake Principal, General, Demand & Condition Inspections on a wide range of structures including Bridges and Retaining Walls. All inspections are compliant with the County Surveyors Society (CSS) Inspection rules. Multi-span and/or multi construction form structures are easily accommodated, including the functionality to survey spans on different dates to accommodate traffic management demands. Additional Spans or Construction Forms can be added on site, updating the main WDM Structures Management System on completion.

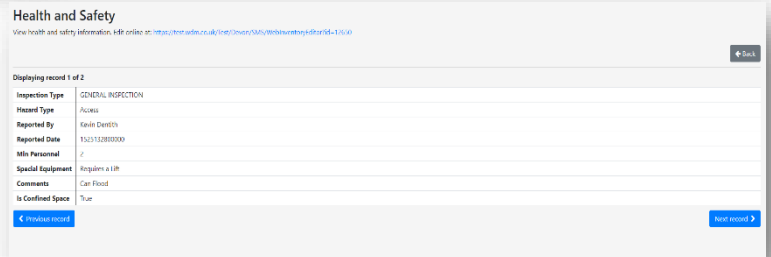
WSI runs on multiple web browsers (Chrome, Firefox etc) allowing a wide range of devices to be used including tablets such as iPads, laptops or larger screen phones. This software is ideally suited for offline working, allowing inspectors to go off site. The large fonts and inbuilt keyboard make Web Structures Inspection specifically suitable for tablet Data Capture Devices. The structures to be surveyed are displayed against a digital map.

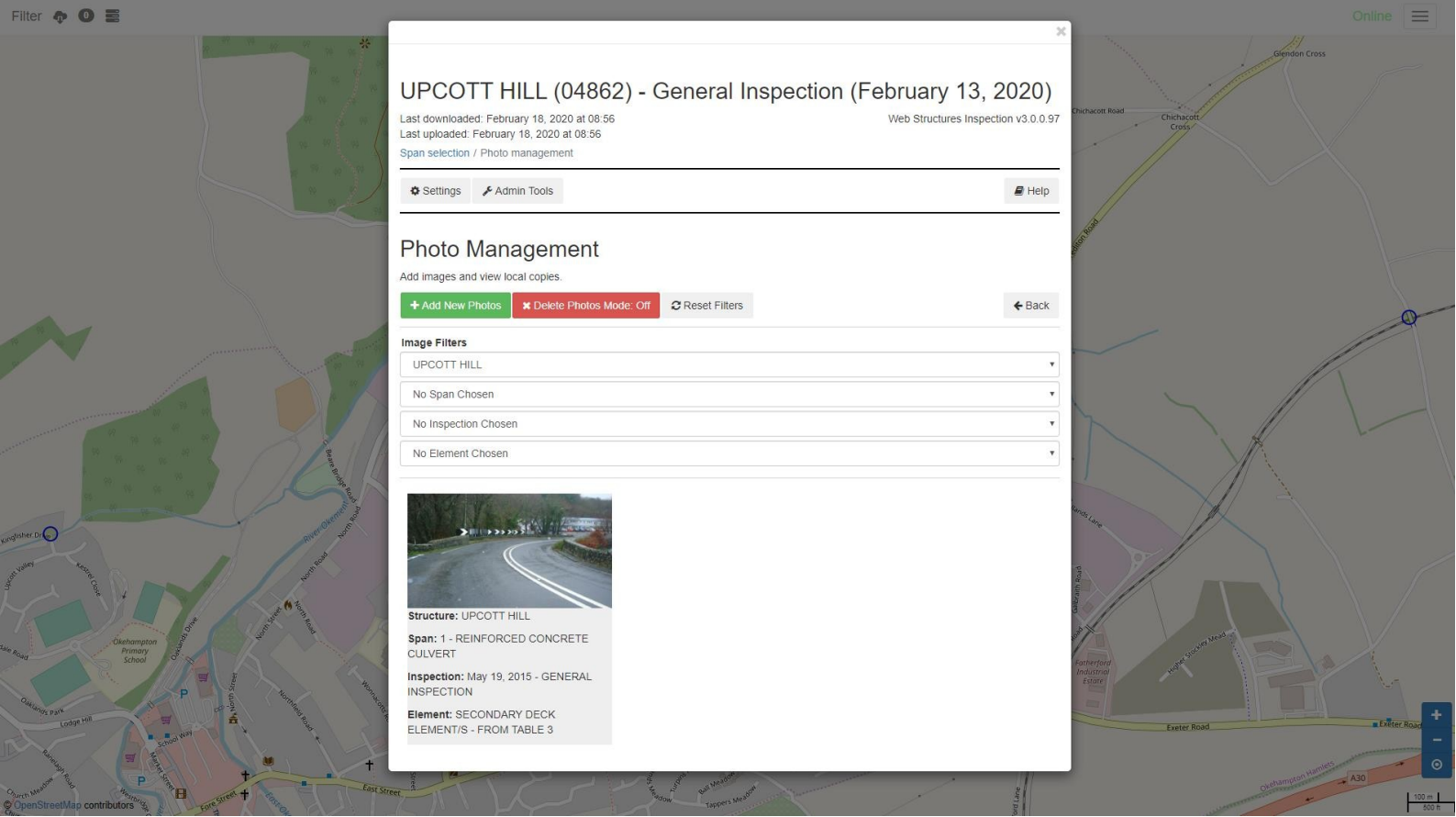
The structures to be surveyed are displayed against a digital map.



The Structure summary data is displayed pre and post survey, allowing the inspector to review and amend values including Inspectors and Engineers Comments. The span length, width and area are automatically populated from the WDM® Structures Management Database. Options are provided to transfer images between the Structures Management System and Web Structures Inspection providing the inspector with information at his fingertips.

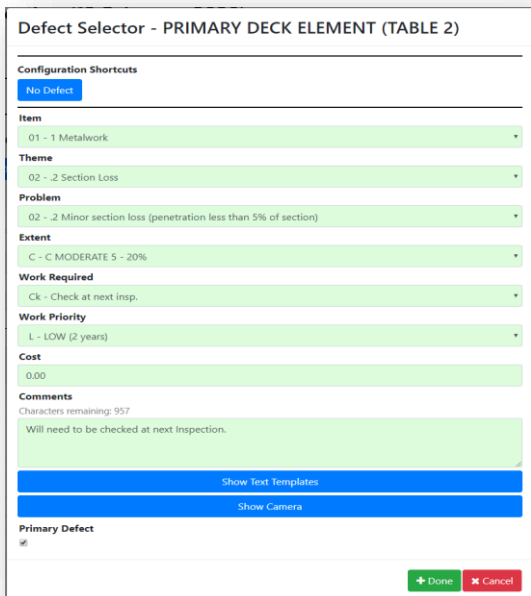
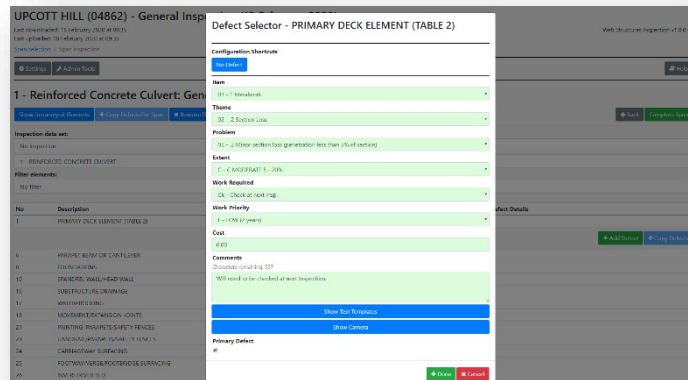
Health & Safety Information held against the Structure in the main Structures Management System is also available to view in WSI. These attributes are totally user definable but typically consist of Hazard, Special Equipment Required and Minimum Number Personnel. This aids the employer in his role defining Safe working arrangements for lone workers.





General Inspections may not be able to collect information on Elements inspected on a Principal inspection due to access limitations. In this case, WSI will prompt the inspector with the information on the element from the previous PI, including any photographs taken. In the case of multi span structures, WSI also allows the inspector to copy defects between spans.

Each Element set is displayed on a separate screen. The Defect and Severity of each element are set automatically based on their relationship. Comments can be held against each element. Where input is not possible from pick lists, an inbuilt keyboard is automatically displayed. To aid the inspector in assessing the rate of deterioration the previous survey information is displayed beneath the current survey.



Demand Inspections can be partial inspections of a Structure, often focused on a single failing element. If a BCI is calculated from these surveys it can skew the overall results. WSI can be configured to exclude certain inspection types (e.g. Demand, Monitor etc) from calculating Condition Scores.

WSI aids the engineer managing the inspection regime and monitoring requirements of Sub-standard Structures as defined in CS470 including highway bridges, retaining walls and other highway structures subject to carriageway loading.