

## BLOG - CIPP Lining Wash Farm, Essex

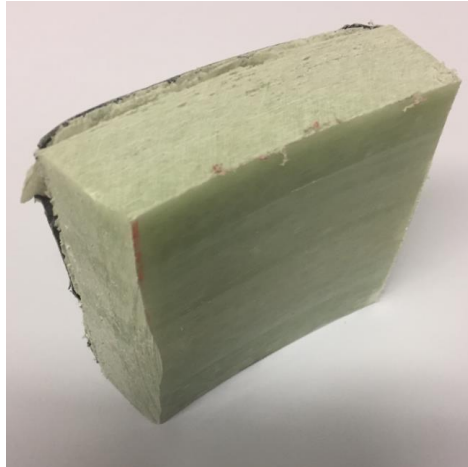
Carries A1017, Sible Heddingham  
Braintree, Essex  
Radial Cracking  
Brick Loss  
Bank Realignment  
LM2 Eurocode Design Spec, fully structural



A long-standing client had an issue with a failing brick structure. The initial option being considered was to excavate and replace the structure. However, the high costs and disruption were prohibiting this solution moving forward.



The client was seeking a solution that would provide a fully structural standalone product which could carry loads in accordance with LM2 of the BS EN-1991-2:2003 Eurocode 1 -Traffic Loads on Bridges CIPP in this case 195 KN/m<sup>2</sup>



iLine with its partner JBA Consulting designed a high-strength GRP / UV CIPP liner with an effective diameter of 1500 mm. The liner thickness was 30 mm and the difference here no one worldwide had produced or installed a UV liner of that thickness before.



Working together with our partners, the lining solution was developed, implemented and commissioned to the delight of our client, who commented; "it's a pleasure to see a contractor with such a passion for providing such a great product & service. The installation was only 20% of the traditional replacement costs – we'll certainly be using iLine again soon."

A great testament to iLine for installing a large UV-CIPP liner. But more importantly the thickest in the world. We remain the only UK specialist contractor able to deliver such innovative & unique products.