



Fosroc Solutions for Joint Sealing

ABOUT FOSROC INTERNATIONAL

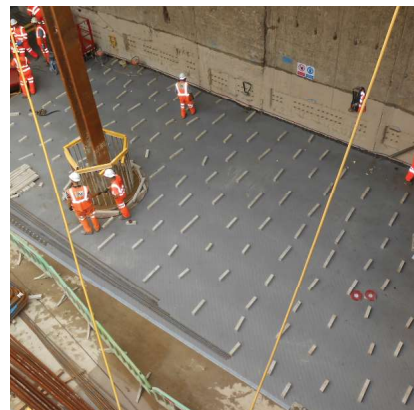
Since the company's beginnings over 80 years ago, Fosroc has developed into an International leader in delivering Constructive Solutions for projects across a broad range of market segments including transport, utilities, industrial and general buildings.

Fosroc's commitment to customer service and technical support is second to none. We work closely with architects, structural engineers, contractors and owners to best understand their requirements. Together we can develop a bespoke solution for a construction project, adding value and becoming more than just a materials supplier, but a solution provider.

Fosroc has an extensive network of offices and manufacturing locations across Europe, the Middle East, India, North and South Asia, and is further represented in other regions across the world by distributor and licensee partners.

Selecting from the full portfolio of Fosroc products and services and integrating expert technical support, world class customer service and innovation, Fosroc goes beyond just product selling to ensure that we partner with our customers to deliver complete constructive solutions.

- > Admixtures
- > Adhesives
- > Protective Coatings
- > Concrete Repairs
- > Industrial Flooring
- > Grouts & Anchors
- > Joint Sealants
- > Surface Treatments
- > Grinding Aids
- > Waterproofing



Leader in delivering
Constructive Solutions
Worldwide!

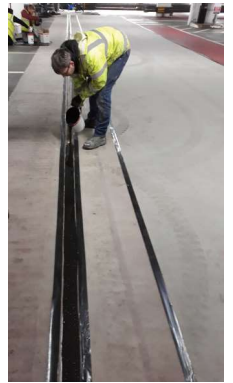
SEALANTS

Joint sealants are used in most types of structures - from housing, offices, stadia, industrial buildings and airports, to bridges, roads, power stations and reservoirs. They accommodate the differential movement of the structure's components while preventing the penetration of water, wind or chemicals, depending on the location and service requirements. For some joints preventing fire transmission is also an important requirement. With such a wide range of applications many factors have to be taken into consideration when specifying a sealant to provide an effective and durable solution.

Buildings - Housing, Offices, Stadia



Concrete Slabs - Airport Runways & Aprons, Industrial buildings, Yards, Car Parks



Civil Structures - Bridges, Power Stations, Reservoirs





BUILDINGS

Facade Joints, Window, Doors



Typical applications

Brickwork / stone expansion joints
Perimeter window and door joints
Rainscreen /unitised facades
Insitu & Precast concrete panel joints
Fire rated joints

Design Considerations

Low Modulus - Lightweight façade panels moving easily & quickly
Must be soft, able to rapidly stretch and close
Fire protection / rating
Non-Staining properties
Replacement /maintenance cycle

NITOSEAL MS100

One part, primer-less, non-staining facade sealant.

- Stain-free sealing of joints in and around concrete, brick, masonry, pre-cast panels, stone cladding, windows, doors and fibre cement sheeting.
- Can be applied to damp substrates
- Performs as an acoustic sealant
- Excellent UV and weather resistance

NITOSEAL MS60

- One part, general purpose building sealant
- Adhesion to most common building materials
- Easy to apply
- Can be applied to damp substrates
- Performs as an acoustic sealant.
- Available in a range of colours
- Environmentally friendly

FLAMEX RANGE

Flexible fire rated and intumescent sealants for fire protection in expansion and construction joints in walls, floors and ceilings

Flamex S - one part fire rated silicone sealant

- Tested to BS 476 Part 22:1987 (ISO 834)
- Acts as an acoustic sealant

Flamex One - one part emulsion based, intumescent sealant

Flamex Two - two part polysulfide intumescent sealant, resistant to chemicals

- Extensively fire tested in accordance with BS 476 Pt:20:1987.





FLOORS / PAVEMENTS

Internal Floor Joints



Typical Applications

Factory floors
Sports stadia terracing
Shopping centres
Warehouse and distribution depots
Concrete hardstanding areas
Prisons

Design Considerations

Suitable for forklift truck traffic
Suitable for saw cut and perimeter joints
Exclude moisture
Abrasion resistant
Fast rate of cure
Can be applied to damp substrates
Primer-less for most applications
Hard, but flexible sealant; resists picking & vandalism



NITOSEAL MS300

One part, primer-less floor and pavement joint sealant suitable for sealing saw-cut and movement joints in internal floors, and external joints where abrasion resistance is required. It can also be used for external facade joints where a tougher seal is required.

- Factory floors
- Sports stadia terracing
- Shopping centres
- Warehouse and distribution depots
- Prisons



COLPOR 200PF

Cold applied, high performance, two part pavement joint sealant for the sealing and maintenance of joints in concrete roads, concrete runways and hard standings.

- High durability and long service life
- High movement accommodation
- Cold applied — no heating equipment required
- Fuel, oil and hydraulic fluid resistance
- Jet blast resistant and standings.



FLOORS / PAVEMENTS

External Pavement Joints

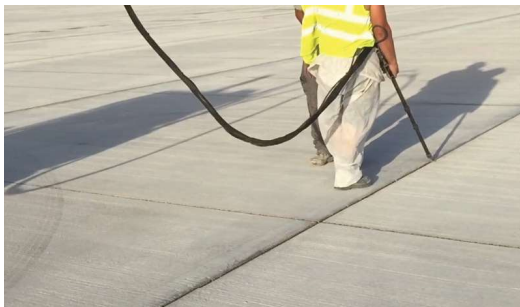


Typical Applications

Yards & car parks
Loading bays & storage areas
Pavements
Podium Decks
Hard standings

Design Considerations

Suitable for heavy traffic
Prevent ingress of contaminants & grit
UV Resistant
Abrasion resistant
Fast rate of cure
Can be applied to damp substrates
Primer-less for most applications
Hard, but flexible sealant; resists picking & vandalism



THIOFLEX 555

High performance, two component polysulfide, pavement joint sealant suitable for sealing and maintenance of joints in concrete roads, concrete runways and hard standings.

- Machine applied grade for ultra fast safe application
- High extrusion rates
- Rapid return to service
- Available in hand grade
- Fuel and hydraulic fluid resistance
- Jet blast resistance



NITOSEAL MB333

Nitoseal MB333 is a hot poured, high extension polymer modified bitumen sealant complying with the requirements of BS 2499 :1993 Type N1

- Rapid return to service
- Resists dirt and ingress of grit associated with trafficked pavements
- Good adhesion to concrete and asphalt surfaces



CIVIL ENGINEERING

Containment Tank & Bund Joints



Typical Applications

Potable water tanks
Reservoirs
Sewage tanks
Sea walls
Basements
Subways
Bridges
Superstructures

Design Considerations

Approved use in contact with potable water
Resistant to aerobic & anaerobic bacteriological attack
Excellent resistance to dilute acids & alkalis
Excellent hydrostatic head resistance
Can be applied to damp substrate
Single component /fast rate of cure
Chemical & heat resistance



NITOSEAL MS600

One part polyether sealant for movement joints in buildings and civil engineering structures including joints that will be subject to intermittent or permanent immersion.

- Recommended for use in contact with potable water
- Resistant to aerobic and anaerobic bacteriological attack
- Exhibits excellent water resistance
- Excellent resistance to dilute acids and alkalis
- Potable water approved (BS 6920 : Part 1:2000)



THIOFLEX 600

Multi-component, gun and pouring grade, polysulfide sealant for sealing movement joints in building and civil engineering structures, including superstructures, floors, basements and subways.

- Forms a tough, elastic, rubber-like seal
- Accommodates continuous and pronounced cyclic movement
- Excellent adhesion to most common substrates
- High resistance to ageing



Product Selector



PRODUCT	UNIT	COL- OUR	PRIMER	USES
WATER INDUSTRY				
Nitoseal PU12	4 x 2 ltr	Grey	Fosroc Primer 7 on porous surfaces	Tidal / dirty water joints
Nitoseal MS600	10 x 600ml sachets	Grey	Fosroc Primer MS2	Potable water, dirty water, building and civil engineering structures

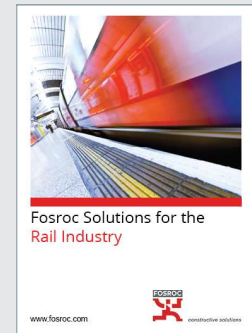
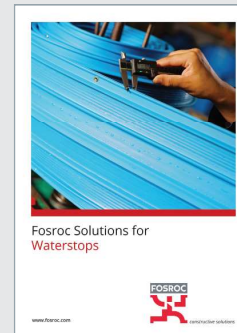
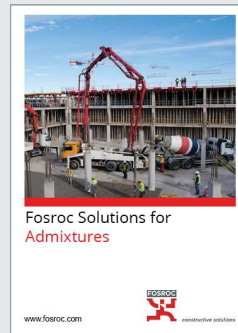
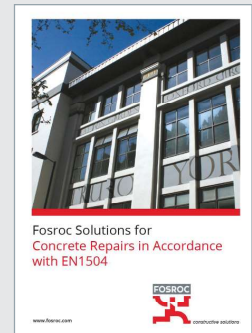
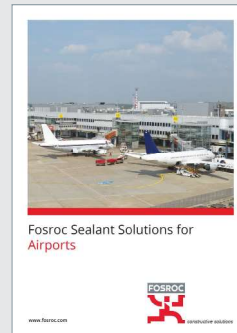


CONCRETE PAVEMENTS				
Thioflex 555 Hand Grade	5 litre packs	Grey	Primer 7E	
Thioflex 555 Machine Grade	5 litre packs 30 and 400 litre packs	Grey	Primer 7E	
Colpor 200PF	2 x 5ltr	Black	Primer 20 - Primer 19 in wet service conditions	Fuel resistant for trafficked areas
Nitoseal MB333	15kg	Black	Primer B2	Non fuel resistant trafficked joints
Nitoseal MBN2	15kg	Black	Primer B2	Non fuel resistant trafficked joints
Nitoseal PU878	2 x 5ltr	Grey	Primer 19	Fuel resistant for concrete roads and runways
Nitoseal MS300	10 x 600ml	Grey	Fosroc Primer MS2 in permanent immersion and external areas	Sawn /perimeter joints in concrete, pedestrian and trafficked areas



FIRE PROTECTION				
Flamex One	20 x 380ml	Grey, White	Flamex One slurry	Internal low movement joints, all substrates
Flamex Two	4 x 2.5ltr	Grey	Primer 4 non-porous substrates, Primer 7 porous substrates	Internal / external joints, all substrates. Good hydro-carbon resistance
Flamex S	20 x 380ml	Grey, White	Flamex S primer	Internal / external joints, all substrates

Fosroc offers a full range of construction chemical solutions, helping to protect structures throughout the world. Please refer to our brochures, which include:



Fosroc International Ltd
Drayton Manor Business Park
Coleshill Road
Tamworth
B78 3XN

T: 01827 262222
E: enquiryuk@fosroc.com
www.fosroc.com

Important Note

Fosroc products are guaranteed against defective materials and manufacture and are sold subject to its standard terms and conditions of sale, copies of which may be obtained on request. Whilst Fosroc endeavours to ensure that any advice, recommendation, specification or information it may give is accurate and correct, it cannot, because it has no direct or continuous control over where or how its products are applied, accept any liability either directly or indirectly arising from the use of its products, whether or not in accordance with any advice, specification, recommendation or information given by it.



constructive solutions

UKv2/1121/1k