

# AGD 641

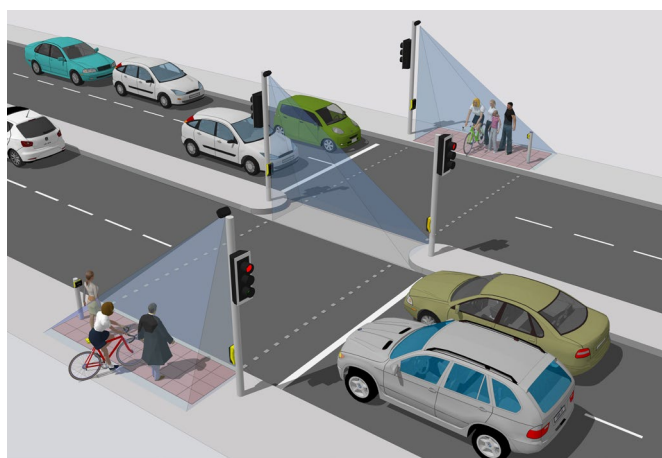
## PEDESTRIAN DETECTOR

The AGD 641 Pedestrian Detector is a smart, optical, dynamic environment detector that makes crossings safer and more efficient by delivering robust detection day and night within large 4m x 2m zones.

It is a high-performance, intelligent product that processes information on board with new chip-set and sophisticated algorithms for automated decision-making to provide ultra-reliable detection.

The 641 employs 3D stereo-optics to detect and monitor pedestrians and cyclists waiting to cross the road, so the crossing phase is only called when they are present in the wait area.

It has an outstanding capability to detect people while rejecting shadows, litter, leaves and other small objects like birds in the zone.



### Features

- 4 x 2m zone for monitoring the pedestrian wait area - enhances safety and efficiency of the crossing
- 3D stereo vision with self-IR illumination of zone for enhanced night-time detection
- Flexible polygon tool allows quick zone configuration
- Easy WiFi AGD Touch-setup – speeds installation and reduces risk
- Compatibility with old and new controllers makes the AGD641 an ideal solution for any site

### Traffic & Pedestrian Control



*safer, greener, more efficient*

[agd-systems.com](http://agd-systems.com)

# AGD 641

## PEDESTRIAN DETECTOR

### AGD Touch-setup

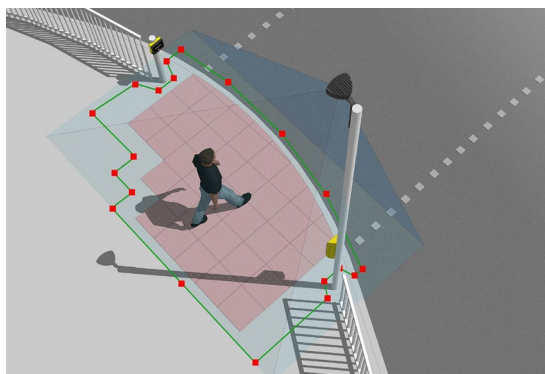
WIFI 3-CLICK TOUCH-SETUP

#### WiFi AGD Touch-setup with flexible polygon zone tool

The 641 is quick to set up using any WiFi device - smart-phone, tablet or laptop - with its unique & secure AGD Touch-setup that allows installers to configure the device in three simple steps:

1. Name device
2. Select zone
3. Click to calibrate

Multiple AGD detectors may be set up at the same time from a safe position on the ground, or in a vehicle up to 30m away. Conveniently, the 641 can be adjusted for zone changes just as quickly in the same way.



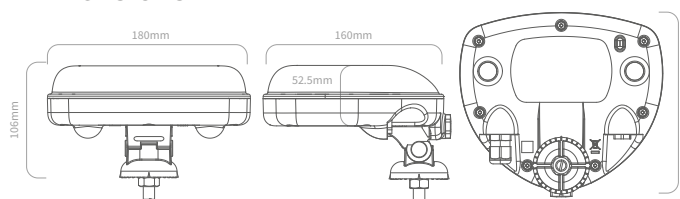
Flexible AGD polygon zone tool

The smart AGD 641 provides greater performance over a larger area than its predecessor the exceptional AGD640 which is used on over 15,000 sites worldwide providing reliable detection for pedestrians and cyclists. The AGD641 is the ideal detection solution for your intelligent crossings combining well with the AGD326 on-crossing detector to significantly improve crossing safety and efficiency.

#### Product Specification

<b>Description</b>	Pedestrian Detector
<b>Technology</b>	AGD 3D Optical Stereo Vision
<b>Detection Zone</b>	4m x 2m (mounted @4m)
<b>Mounting Height</b>	3 - 4m (3.5m nominal)
<b>Power Supply</b>	12 - 24V AC/DC or 230V AC
<b>Power</b>	3.36W @ 24V DC @ 140mA
<b>WiFi Frequency /Power</b>	Frequency range (MHz): 2412-2472
<b>Detect Output</b>	Single Opto
<b>LED Indication</b>	Front LEDs for detect and WiFi connection
<b>Housing Material</b>	Black Polycarbonate
<b>Sealing</b>	IP55 & NEMA 250 4X
<b>Operating Temp</b>	-34°C to +74°C
<b>Configuration</b>	WiFi AGD Touch-Setup
<b>Lux Level</b>	In-built IR illuminator for low light/nighttime
<b>Dimensions</b>	W 181mm x D 160mm x H 106mm (Sun Shield Variant: W 196mm x D 175mm x H 110mm)
<b>Weight</b>	500g (Sun Shield Variant: 620g)
<b>Complies with</b>	EMC: BS EN 50293:2012, EN 301 489-17, EN 301 489-1 Health & Safety: BS EN 62368, EN 60950-22, EN 62311 Spectrum: EN 300 328 RoHS: EN 50581 Other: TOPAS 2507A, NEMA TS 2 2016
<b>Patent No.</b>	GB 2448617

#### Dimensions



#### Tested and AGD Certified

All AGD products are Tested, Calibrated and AGD Certified so customers know that all devices will perform exactly as described.

#### PRODUCT SOLUTIONS FOR INTELLIGENT TRAFFIC SYSTEMS