

# ACO Civils + Infrastructure Range

ACO offers advanced drainage systems for managing, treating, and protecting surface water resources in a wide range of civil engineering projects.

The portfolio has been designed to provide the optimum solution for storm water control and sustainable drainage systems, as well as products for wildlife conservation and specialist solutions for sports arenas.

[www.aco.co.uk/aco-water-management](http://www.aco.co.uk/aco-water-management)

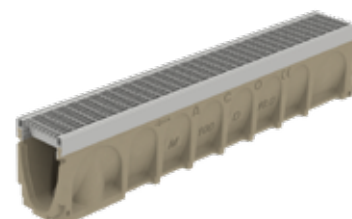
## ACO Multiline Sealin

ACO Multiline Sealin is a high strength channel drainage system with an integrated seal, making it an ideal solution for conveying contaminated surface water. The system is certified up to Load Class D 400 and has a high chemical resistance.



## ACO MultiDrain® MD

ACO MultiDrain® MD is a high strength channel drainage system, designed to collect surface water in urban environments. A range of gratings are available to suit both traditional and contemporary installations.



## ACO Lightpoint

ACO Lightpoint channels incorporate ductile iron grates with high performance LED spotlights to enhance professionally designed landscapes. Adaptable and easy to install, these grates are available in 100 and 200mm widths and are certified to load class D 400.



## ACO S Range

ACO S Range is a high capacity grated channel system for the efficient removal of surface water in heavy duty applications. This F 900 channel has integral cast iron edge rails, and bolted ductile iron grates making it suitable for extremely high wheel loads including ports, docks and aircraft pavements.



## Water Positive CPD

[www.aco.co.uk/water-positive](http://www.aco.co.uk/water-positive)



Safeguarding water is essential for sustaining life and the environment. Our new CPD explores sustainable water management practices and technologies that can be incorporated into construction projects to achieve positive environmental outcomes.

Get involved today

Follow the link to learn more about our Water Positive CPD



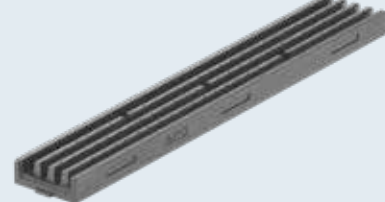
## ACO KerbDrain®

Constructed from high strength polymer concrete, ACO KerbDrain® is a combined kerb and drainage system. Independently certified and Kitemarked to BS EN 1433:2002, this range matches HB1, HB2 and 45° splayed profile kerbs and comes in various depths.



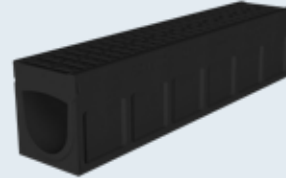
## ACO Multislot

ACO Multislot channels are designed specifically to meet the drainage demands of multi storey and underground car parks. The low profile channel design is manufactured from corrosion-resistant polymer concrete and has no moveable parts, which reduces overall noise when trafficked.



## ACO Monodrain®

ACO MonoDrain® is a high strength monocast polymer channel. Featuring Heelguard inlets this channel removes the hazards and costs associated with dislodged or stolen gratings. Certified to D 400 load class, the system is suitable for a range of applications.



## ACO RoadDrain®

ACO RoadDrain® is a tough one-piece channel drainage system ideal for medium to heavy-duty highways, distribution yards and airfields. The product is also fully compliant with national highways and transport agencies (UK) and National Roads Authority (ROI) requirements.



## ACO H Range

ACO H Range is a high capacity monolithic channel system for the efficient removal of surface water in heavy duty applications. Comprising of both slotted inlets and linear slot channels, the integral grating design make it suitable for extremely high wheel loads.



## ACO Qmax®

ACO Qmax® is a carbon neutral, high-capacity slot drainage system which forms an integral part of any sustainable surface water management solution requiring effective conveyance, attenuation and eliminating carry over in stormwater conditions. Available in a range of sizes and suitable for all load classes.



## ACO SuDS Overflow Gullies

ACO's SuDS Overflow gullies can be utilised in rain gardens and bio-retention areas to protect overflow pipes from debris ingress. A ductile iron gully is available for larger SuDS installations and an ABS plastic gully for smaller areas.



## ACO Universal Gully

The ACO Universal Gully is a high capacity silt management outlet for drainage systems, which provides fast and simple connection between most channels within the ACO range, up to a 200mm bore.



## ACO Q-Ceptor

The ACO Q-Ceptor range has a selection of bypass and full retention oil separators. Available in a range of chamber sizes and suitable for a variety of flow rates, the separators are ideal for use in car parks, maintenance areas and industrial applications.



## ACO Combipoint SSA

ACO Combipoint SSA is a sediment removal system. It is an upstream pre-treatment component which can be used instead of sediment forebays. When used with other SuDS features, it improves water quality and reduces long-term maintenance requirements.



## ACO V-Septor

ACO V-Septor is an advanced hydrodynamic separator that removes sediment bound contaminants. Its design enables removal of pollutants by means of settlement and the capture of floatables. The system is a recognised proprietary treatment solution.



ACO Water Management

Product Range Overview



[www.aco.co.uk](http://www.aco.co.uk)



# Water Positive

What is the initiative and how can you get involved?



[www.aco.co.uk/water-positive](http://www.aco.co.uk/water-positive)



Caring for water is at the very heart of sustainable development. Only when water is properly cared for can it be a renewable resource that facilitates life.

Removal of water as soon as possible can no longer be a starting consideration for any project. Careful thought must be given to design and technology that enables appropriate collection, cleaning, holding, and reuse of water in order to protect and enhance the natural environment.

ACO's Water Positive assists in delivering sustainable water management for the built environment by demonstrating how caring for water can be achieved through three core project considerations: Technology, Design and Environment.

## What are the key elements of an exemplary project?

We consider there to be three essential components that embody best practice:



### Positive Technology

A project which utilises ACO technology to support sustainable water management practices.



### Positive Design

A project design which contributes to managing water in a sustainable way.



### Positive Environment

A project which effectively manages water sustainably, incorporates water positive technology and strives to protect both the environment and water resources.

## Let us help you achieve a Water Positive project

Our teams are here to equip you with the knowledge you need to progress your project quickly and confidently.



[www.aco.co.uk/askaco](http://www.aco.co.uk/askaco)

## ACO QuadraCeptor

ACO QuadraCeptor is a specialist rainwater and surface water run-off filtration system for the removal of sediment and harmful pollutants such as metals and hydrocarbons. Utilising a four stage treatment process, it effectively cleans surface water run-off from roofs, car parks and roads.



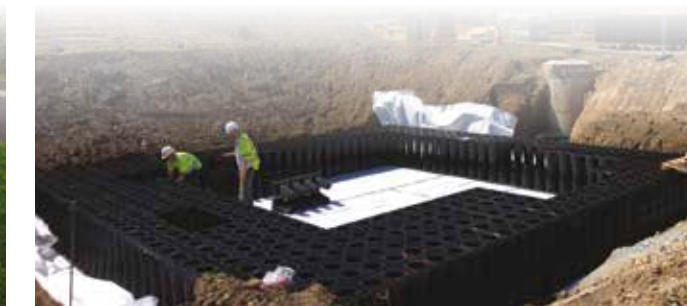
## ACO SuDs Swale Inlet

The ACO SuDs Swale Inlet provides a link between proprietary conveyance drainage systems to vegetated infiltration features such as swales, ponds and water courses. The unit encourages water dispersion and reduces excessive flow velocities helping to prevent erosion.



## ACO StormBrixx

ACO StormBrixx is a unique and patented plastic geocellular stormwater management system for attenuation and infiltration. The patented brickbonding and crossbonding feature delivers a strong and robust tank installation while its unique pillar design gives it a high void ratio of 95%-97%.



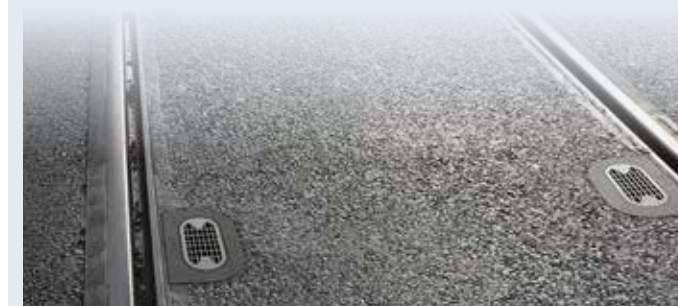
## ACO Q-Brake & Q-Plate

Both ACO Q-Brake Vortex and ACO Q-Plate regulate the release of stormwater before it discharges into the water course or sewer, thus preventing downstream flooding.



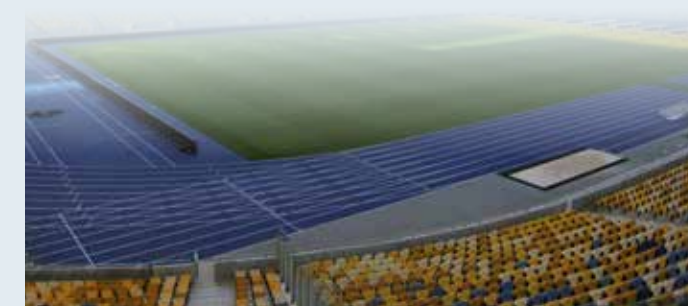
## ACO Rail Access Point

ACO's Rail Access Point provides clear visibility and access to installed rail drainage for easy maintenance. ACO's Vienite® polymer concrete is naturally less conductive, giving these units significantly superior performance against stray currents compared to metal access points.



## ACO Sport

The ACO Sport range is designed to meet the demands of track and field facilities. The portfolio maximises the functionality of athletic facilities without disrupting the performance of athletes and players. Ideal for use in athletic arenas from school fields to Olympic Stadiums.



## ACO Wildlife Kerb

The ACO Wildlife Kerb is designed with a front recess to allow amphibians and other small animals to bypass road gullies safely. The kerb matches the standard half batter profile, and its 915mm length means that it can be used to replace an existing standard BS kerb.



## ACO Climate Tunnel

The tunnel system allows small animals to cross roads safely between different areas of their natural habitat. The ACO Climate Tunnel is available in slotted and solid top variants, can be installed flush to, or below, the road surface.



## ACO Guide Wall

The ACO Guide Wall prevents small animals from accessing danger areas such as roads. The integral barriers on the front face act as a wall, while the front foot area suppresses vegetation and provides a clear movement area for animals.



## ACO One-Way Fence and Tunnel Entrance

The system prevents small animals from moving into hazardous areas and guides them to a tunnel under the road. The One-Way Fence and Tunnel Entrance is designed to be used in conjunction with the ACO Climate Tunnel.



## ACO Wildlife Refuge

The ACO Wildlife Refuges have been designed to provide shelter and sanctuary for various types of small animal. The different opening types and sizes prevent predators from gaining access while allowing smaller animals to move to safety.



## ACO Bat and Nest Boxes

The ACO Bat and Nest boxes are designed to provide refuge for bats and birds. The boxes are three standard brick courses high and half a brick course in width, so are easy to build in to a wall during construction.

