

PRISONERS BUILDING HOMES (PBH)

Delivering socially-responsible, low cost, eco-friendly housing

Watch our videos:

[Prisoners Building Homes - short clip](#)

[Overview: Prisoners Building Homes Programme](#)

[How it works/outcomes](#)



1

What is the PBH Programme?:

- **PBH unlocks land to deliver affordable, high-quality, low carbon, eco-friendly, sustainable homes nationally**
- **Whilst creating job opportunities for serving prisoners and prison leavers to enable them to turn their lives around and reduce the cycle of reoffending**



Home delivered by PBH in Torquay for women with children fleeing domestic abuse

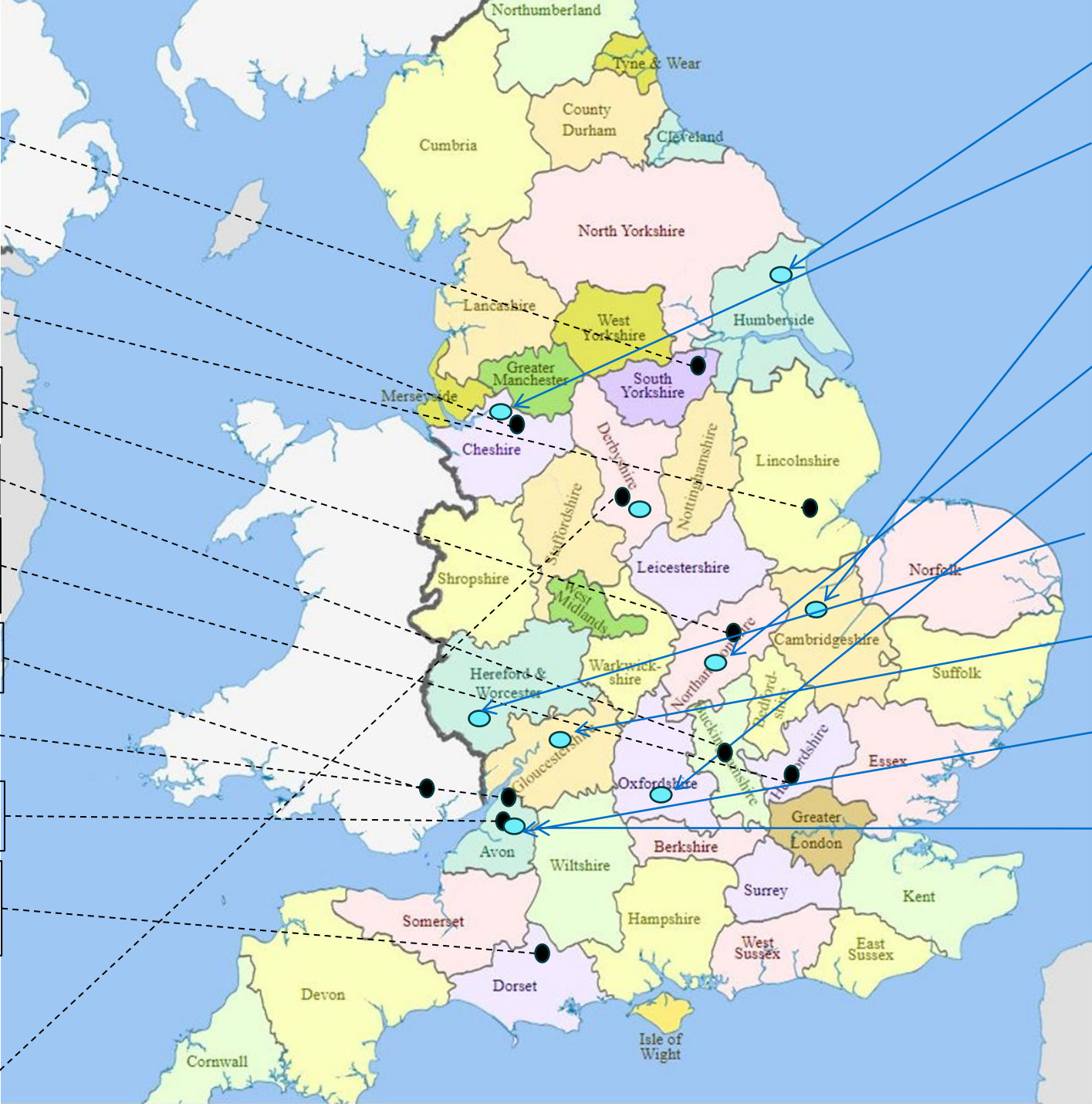
Strategic Objectives:

- Increasing affordable sustainable quality housing supply (MMC)
- Unlocking underutilised land to address housing pressures including affordable, social, key worker, homeless and housing for vulnerable people
- Increasing skilled workers within the MMC construction industry
- Reducing reoffending and supporting victims
- Bringing public sector assets (prison workshops) into use
- Delivering against Net Zero Carbon & Levelling Up agendas





- HMP Hatfield** (Doncaster partnered with Reds10)
- HMP Thorn Cross** (near Warrington partnered with Vistry Group)
- HMP North Sea Camp** (Boston partnered with Zed Pods/DragonHeart Homes)
- HMP Five Wells** (Wellingborough partnered with Hill Group)
- HMP Springhill** (Aylesbury partnered with Agile)
- HMP The Mount** (Near Hemel Hempstead -Workshop making Agile product)
- HMP Prescoed** (Pontypool Wales partnered with RD Sips)
- HMP Leyhill** (partnered with MMC Homebuilding/Snug Homes)
- HMP Bristol** (partnered with Bristol Together/Snug Homes)
- HMP Guys Marsh** (Shafesbury partnered with Bristol Together- post release)



Reds10 : Driffield

Vistry Works

Vistry Group : Warrington



Zed Pods : Peterborough



Hill Group : Northampton



Agile : Abingdon



RD Sips : Pontrilas



MMC Homebuilding : Gloucester

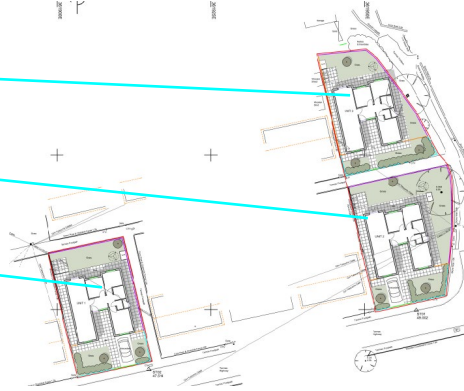
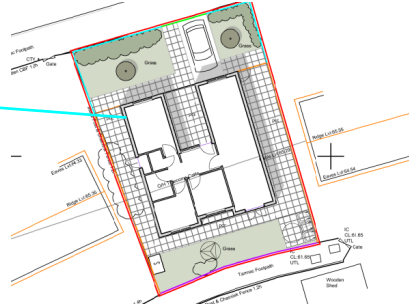


Bristol Together : Bristol



SNUG Homes : Bristol

Bringing micro-sites into use



Sustainability:

- LGS frame 30% from recycled steel and 100% recyclable at end of life
- Maintenance free exterior cladding
- Crushed milk cartons recycled as an insulation layer outside ROCKWOOL® insulation (A1 non-combustible).
- Welsh slate waste recycled in robust internal wall panels.
- Underfloor heating to maximise internal living space and reduce energy bills (requires lower temperatures).
- Natural cork waste recycled in wall coverings
- Solar assisted air source heat pump for hot water and heating
- EPC A rated

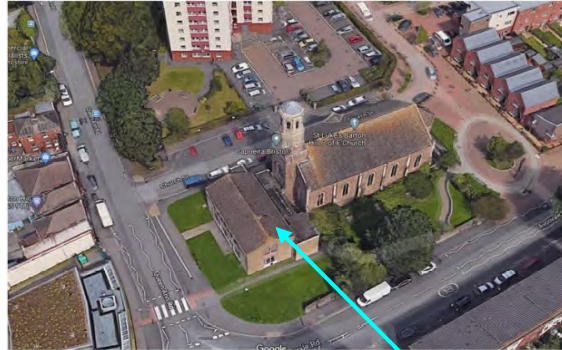
Supporting cash-strapped local authorities:



Relocatable homes for lease:

- **Innovating in land use - demountable/relocatable housing enables local authorities to provide meanwhile use accommodation yet also deliver on longer term objectives for the land**
- **Available on 7-year lease (to comply with best value requirements)**
- **Rent capped at LHA rate (where feasible) to support cash-strapped local authorities. Providing valuable savings to public purse by moving people out of expensive private rental accommodation and unsuitable B&B accommodation**
- **No capital funding required (rent only), planning costs funded by PBH**
- **Means of unlocking land across the nation, paving the way for future housing development targeting the needs of the local authorities**

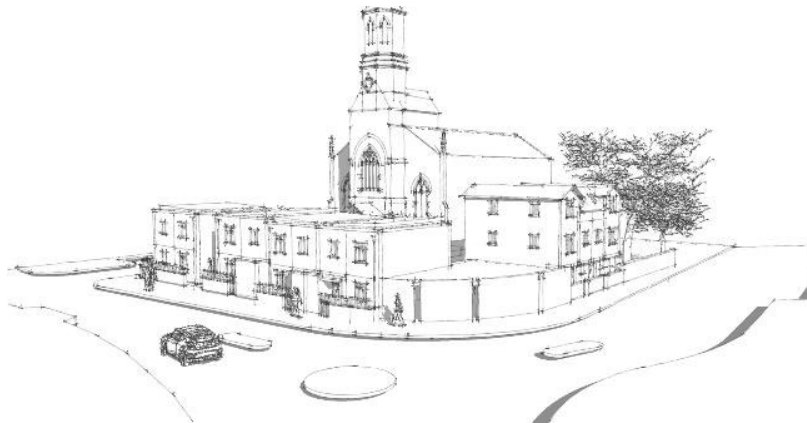
Church site- Bristol



Homes
England



Ministry
of Justice



Residential Women's Centre - bringing together partners to address the needs of vulnerable women (24/7 support) – 2 family homes and 12 self-contained studio apartments with co-living accommodation



Bringing a traditional look to modular (4 semi-detached family homes - LHA rent (Plymouth))



Delivering keyworker accommodation (adult social care) adjacent to care services

Disused garage/car park sites



Potential for 8 x 3 bed family houses or 18 x 1 and 2 bed homes



ZED PODS in partnership with Mid Devon District Council, delivered zero-carbon social-rent modular homes (6 apartments — a mixture of 1 and 2 beds) on a council-owned site previously occupied by garages and car parking in Cullompton (St. Andrews Estate) — a constrained site unsuitable for traditional build. ZED PODS employ 16 serving prisoners in their factory.

Next steps/opportunities:

- Do you have any sites for the delivery of affordable housing that we can support you with– micro-sites; church sites; disused garage/underutilised car park sites?
- If capital funding is limited for permanent build – what about leasing homes?
- What about sites for keyworker accommodation?



Please contact: Sophie Baker, Prisoners Building Homes Programme Delivery Manager sophie.baker@dc-pcc.gov.uk



To find out more about how the PBH Programme works please contact:

SOPHIE BAKER, PRISONERS BUILDING HOMES PROGRAMME DELIVERY MANAGER
sophie.baker@dc-pcc.gov.uk