

TEMPORARY STEEL HOARDING SPECIFICATION

✉ info@mjkmanufacturing.co.uk
➡ mjkmanufacturing.co.uk



IN-GROUND &
ON-GROUND
HOARDING OPTIONS
OVERLEAF



TEMPORARY STEEL HOARDING

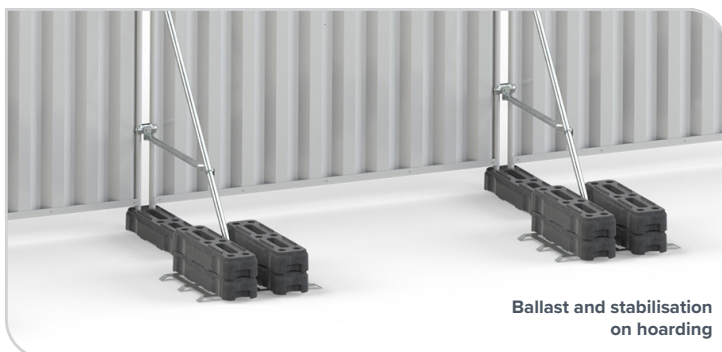
We offer a strong, versatile hoarding system which can be easily installed and dismantled by hand. It is generally a free standing system that is more cost effective than the timber hoarding options.

Meshed temporary fencing panels can deter trespassers, but they offer little protection against determined criminals who can still see the site. Steel hoarding, on the other hand, keeps your site out of sight and out of mind, allowing uninterrupted work on both sides of the fence.

Available in standardised panels that are lightweight, easy to store, transport, and install, temporary steel hoarding provides privacy and security in a cost-effective way. The free-standing panels ensure that the installation won't cause any damage to the site while work is underway. This product is also compatible with all temporary fencing systems, giving site operators the flexibility to mix and match for cost-effectiveness and utility.

KEY FEATURES

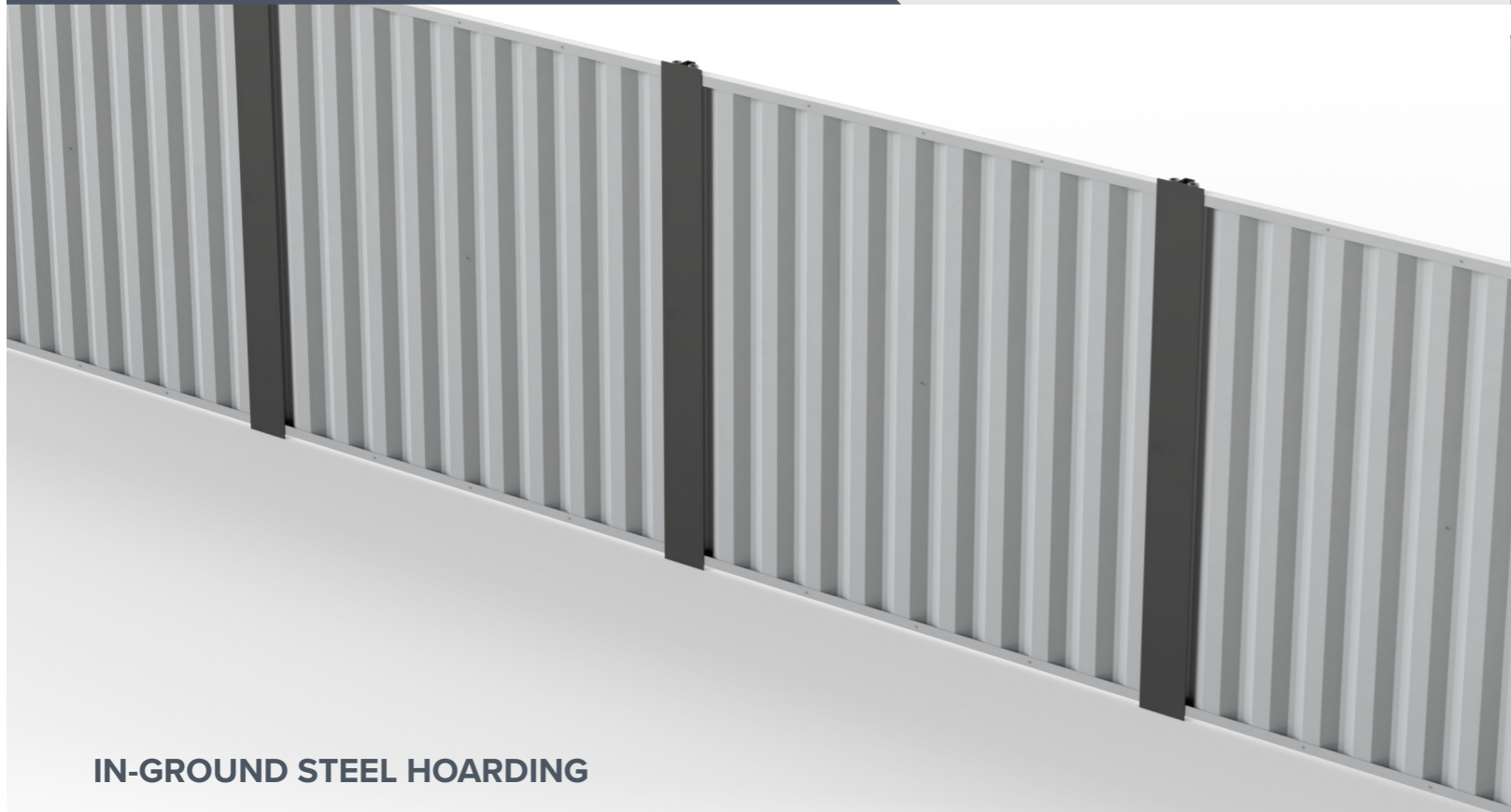
- Freestanding so no digging necessary
- Compatible with all temporary fence products
- Vehicle and pedestrian gates available
- Can be painted or powder coated



Ballast and stabilisation
on hoarding

SPECIFICATIONS

Product ID	THS110050	THS110200
Height (mm)	1980	2380
Width (mm)	2140	2140
Weight (kg)	30	40



IN-GROUND STEEL HOARDING

In-ground steel hoarding is often utilised for extended construction projects or in high-security areas that require extra safety measures.

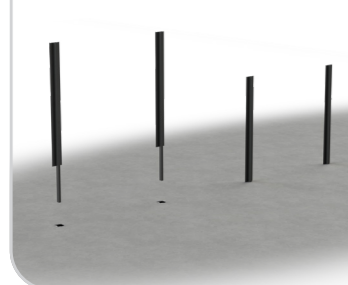
This type of hoarding system involves embedding a portion of the steel posts into the ground, enhancing stability and security. The buried section acts as an anchor, deterring unauthorised access and attempted breaches.

Our in-ground hoarding offers a cost-effective and durable solution that ensures maximum security. Unlike temporary mesh or hoarding panels that rest on the ground, this system is directly embedded, creating a seamless connection with the surface. It is available in both 2-meter and 2.4-meter heights, with posts typically buried at a depth of 600mm. This depth provides the panels with sufficient support to withstand the adverse effects of extreme weather conditions.

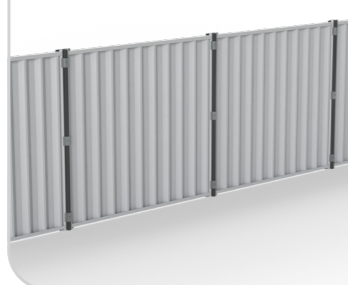
In-ground hoarding is widely used to enhance site security and can be quickly assembled to secure hazardous areas, protecting both personnel and equipment.

For sites requiring access, pedestrian or vehicle gates, these are available in either mesh or solid design that can be easily installed within the hoarding line.

Steel posts inserted into the ground



In ground hoarding fully installed



KEY FEATURES

- Increased and reinforced strength from corrugated galvanised steel sheets.
- Channel along top and bottom is 'bird mouthed' to snugly fit flush around the pole and hold the steel sheets into place.
- The buried portion prevents unauthorised individuals from moving or breaking the hoarding

SPECIFICATIONS

Product ID	THS111350	THS111400
Height (mm)	2000	2400
Width (mm)	2133	2133
Weight (kg)	30	40



ON-GROUND STEEL HOARDING

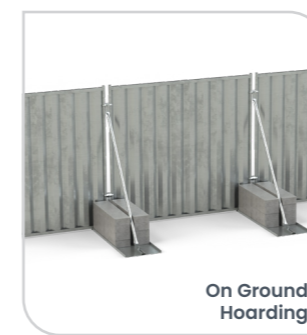
This type of hoarding system is installed directly on the ground with no part being buried. The steel panels are secured to each other using frames or braces, while rubber feet help keep the hoarding in place.

Unlike our In-Ground steel hoarding, the 'anchor' point for this system remains above the surface, with anti-slip feet ensuring it stays securely in place. Our On-Ground hoarding systems offer an excellent short-term solution in urban areas where excavation is not possible, such as on pavements, roads, or other surfaces. This option is ideal for sites with limited budgets, as it eliminates the need for costly digging.

This powder-coated perimeter hoarding system is simple, cost-effective, and robust. Supported by rubber feet or base supports, the hoarding sits on the ground rather than being embedded. It is available in both 2m and 2.4m heights and is constructed from reusable and fully recyclable materials.

Hoarding panels are commonly used to enhance site security and can be quickly assembled to secure hazardous areas, protecting both staff and equipment. The system is easy to handle, requiring just two people to lift, with a single connection taking as little as five minutes to complete. For pedestrian access, a Pedestrian Gate barrier can be easily installed, while vehicular access can be accommodated with our Hoarding Vehicle Gate.

The specifications and dimensions for the On-Ground hoarding match those of our other hoarding types.



KEY FEATURES

- Cost effective: Compared to the in-ground option, on ground steel hoarding is generally more cost-effective due to reduced installation requirements.
- Flexibility: On ground hoarding can be easily repositioned or relocated as and when needed
- Easy to slot into standard or hi-visibility rubber block fence feet.
- Infill panels also available to fill gaps on hoarding panels

SPECIFICATIONS

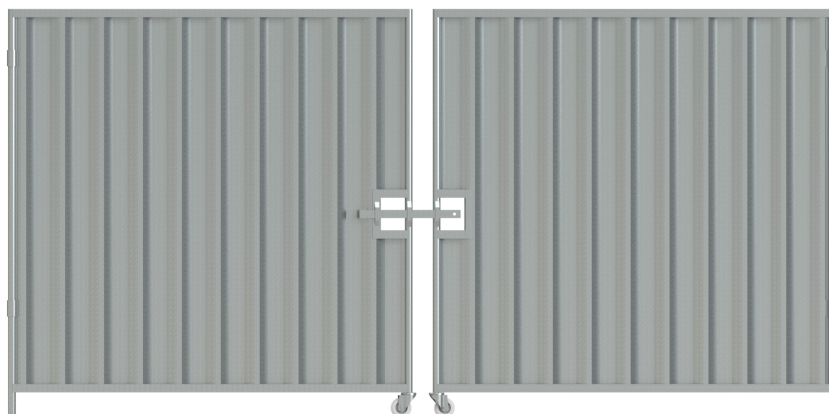
Product ID	THS111050	THS111000
Height (mm)	2000	2400
Width (mm)	2133	2133
Weight (kg)	30	34

VEHICLE & PEDESTRIAN GATES

Vehicle Gates

Easy access to a site can unintentionally cause unwanted access but our vehicle gate attachment provides a solution to this issue. Our vehicle gates come in many sizes, from 4 to 7 metres long. Weight varies from 65kg to 85kg.

Designed and manufactured from powder-coated and galvanised steel, the gates enhance visibility and safety and can support visual aids such as signage or warning notices.



Pedestrian Gates

Our Pedestrian Gates provide a convenient short or long-term entry point whilst maintaining round the clock site security. The pedestrian gate has a sliding bolt latch which can be fastened in place to secure the complex even when unattended.

The pedestrian gates weigh 17kg and are compatible with all our other hoarding and fencing products.

