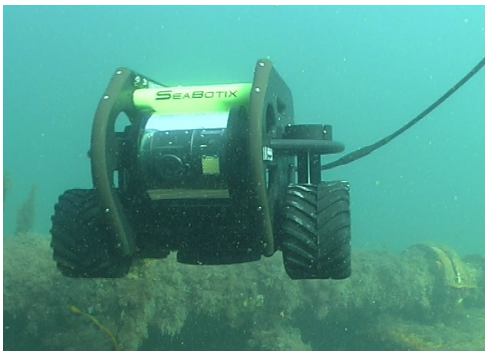


CONTRACTING – HIRE - SALES

Inspectahire provides Remote Visual Inspection services in all its forms:-
Airborne, on land, in Water



are specially trained in the use of Specialist Remote Visual Inspection techniques working in Hazardous Environments which include Explosive Areas, Confined Spaces and areas requiring Rope Access Techniques.



Inspectahire's Remote Visual Inspection Services can react to the following situations:-

- Pre & Post Commissioning
- Asset Integrity planning
- Routine Maintenance
- Fault Detection
- Unscheduled Events
- QA / Expert Witness

Inspectahire's RVI Services Markets are:-

- Oil Industry (Offshore & Onshore)
- Chemical & Process
- Civil Engineering
- Aircraft & Airline Industry
- Utilities (Power & Water)
- Renewables



Inspectahire main business activities include the following :-

- Inspection Services
- Equipment Hire
- Equipment Sales & Service
- Condition Monitoring
- ROV Surveys
- Sample or debris removal
- Video editing & reporting
- Photography
- NDT Surveys
- Tank Assessment
- Thermography
- Laser Scanning
- Sonar surveys
- Optical Gas Imaging
- Airborne IR and OGI surveys



These services are teamed by dedicated Project Engineers and Technicians who

INSTRUMENT-HIRE-SALES-SERVICING

- Waterproof Endoscopes and CCTV technology
- Gas Monitors
- ATEX Lighting
- Digital Cameras
- Laser Surveying instrument
- ROV
- Robotic / tractor systems
- UT systems
- Sonar – imaging or profiling
- Pulsed Eddy Current – Caisson surveys or through cladding
- Drones



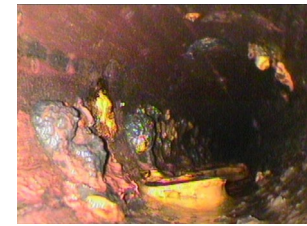
The principal equipment within the Inspectahire portfolio can be summarised under the broad heading listed below

FOR BORESCOPING

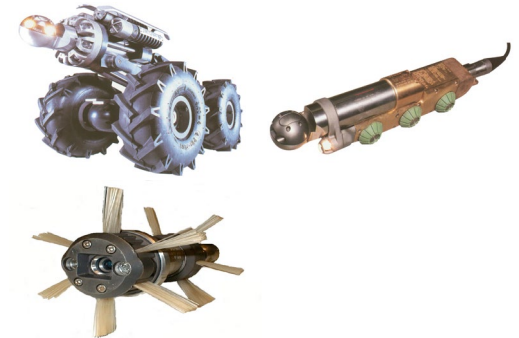
- Rigid Borescopes - varying diameters and lengths - to 8 m
- Flexible Endoscopes
- Video Endoscopes- to 30 m
- Light Sources
- CCTV Pipe Cameras e.g., 25 mm dia. rodable to 100 m.
- Tractor Mounted CCTV systems – to 500m +
- Intrinsically safe cameras



FOR TANK AND VESSEL SURVEYS WITH / WITHOUT MAN ENTRY



- Explosion proof zoom cameras
- Tank Inspection systems
- Pan & Tilt heads inc. Intrinsically safe
- Vacuum Gauge
- MFL tank Floor Scanner
- Remote Control Vehicles
- Magnetic Crawlers



FOR PIPELINES

- Pipe & Cable Locators
- Radio Sondes
- Sonar – imaging or profiling
- Waterproof Push Rod CCTV systems
- Explosion Proof CCTV systems
- Steerable Tractor mounted CCTV systems
- Climbing Tractors
- Tortuous path Tractors
- Visual & UT systems
- Pipe End measurement for matching

FOR NDT SURVEY

- Covermeters
- Laser Surveying of void spaces
- Hardness Tester
- PMI
- IRIS Tube Bundle Systems
- Pi Gauges
- UT systems
- Pulsed Eddy Current Surveys
- ATEX Digital Cameras
- ATEX Ultrasonic Gauges
- Qualified Visual and NDT inspectors
- Holiday Detector
- Magnetic UT Crawler
- Thermographic Cameras
- Optical Gas Imaging Cameras
- Helium Detector
- Radiation Detection
- Paint Coating Testers
- X-ray Backscatter

DISTRIBUTORS FOR

CorDEX

FLIR
Official Authorised Distributor

LYYN[®]
real-time video enhancement

PEARPOINT

**Trace
Industry**

CONTACT:

**Badentoy Road
Badentoy Business Park,
Portlethen,**

**Aberdeen,
SCOTLAND, U.K.
AB12 4YA**

**Tel: +44 1224 789692
Fax: +44 1224 789462**

**Web Address:-
www.inspectahire.com**

**E-mail :-
enquiries@inspectahire.com**

