



Software that **connects**



WHO WE ARE

Mind Of My Own is a tech for good company building social impact software that connects children and families to services and helps them to thrive.



WHAT WE DO

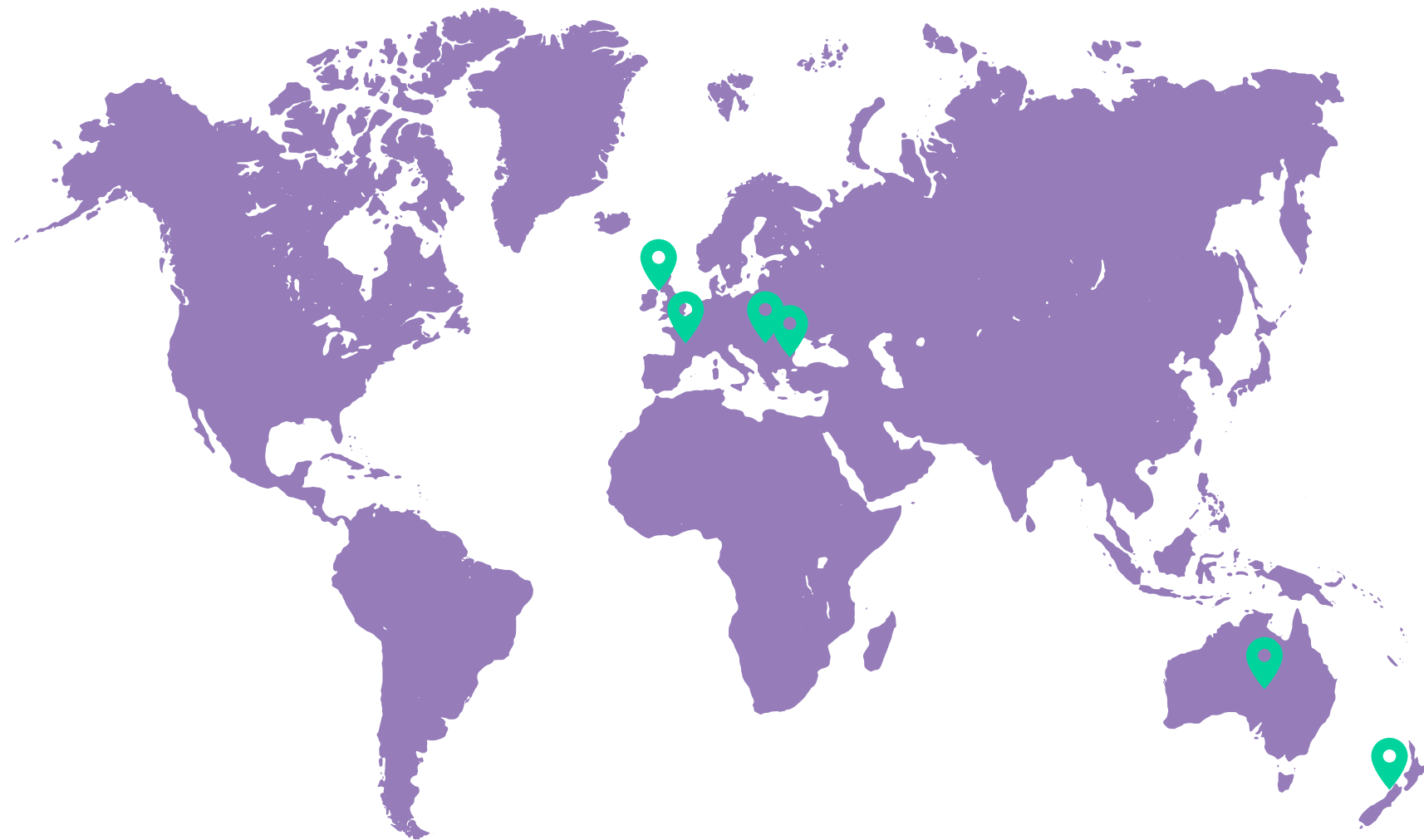
Positive change happens when people actively participate in the services they use. We create **safe and accessible software** that makes this happen.

Our software **drives best practice, supports efficiency and better outcomes**, as demonstrated by the positive inspection results from our community.

We help professionals work smarter, freeing them up to spend more time with children and families. That's why we're trusted by 40 percent of children's services in the UK.



OUR COMMUNITY



Our digital participation tools are used by **450+ councils, voluntary organisations, care providers** and **schools** across the U.K.

We have a growing international community with users across **Europe, Aotearoa New Zealand** and **Australia**

Available in **100+ languages**

ACCESSIBILITY

All of our apps use [Recite Me](#) accessibility software which allows users to change settings to suit their preferences.

Users are able to change the **language**, **font size** and **background colour** as well as access **rulers**, **audio** and **dictionary** tools.



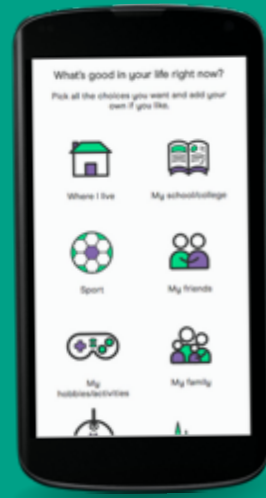


OUR PRODUCTS

At Mind Of My Own we believe that young people should always be able to participate fully in their lives and it should be easy for them to speak up anytime they want.

We create fully accessible apps that **provide a unique digital solution to advancing universal children's rights.**





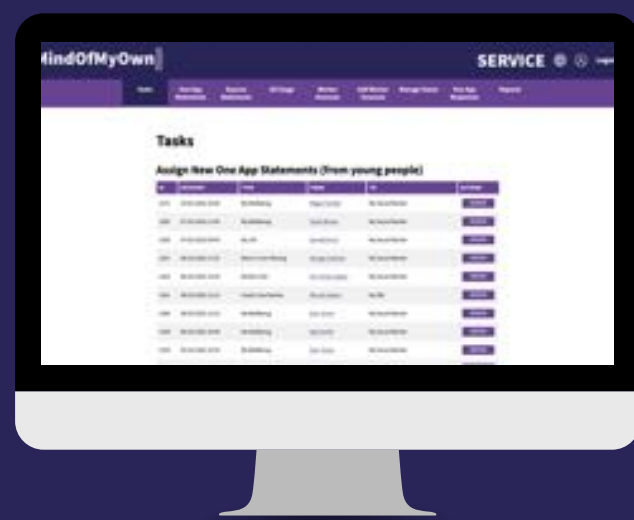
One App

Helps young people 7+ to communicate their views to a trusted adult about all aspects of their lives.



Express

A unique digital tool that meets the needs of children aged 2+ or those with additional needs.



Service Portal

The Service portal is a comprehensive reporting portal, the data from which reflects the real thoughts of young people collected in real time. This information can revolutionise your decision making, whether at an individual, service or organisational level.



SHOUT

The most accessible, child friendly survey tool available



My Best Life

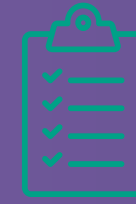
A one-stop-shop digital solution connecting children and families to local support services



Xchange

The first digital participation tool to hear the authentic voices of young people using youth justice services

WHY YOUNG PEOPLE LOVE OUR APPS



They are more actively involved in their care planning



It's quicker than email, easier than the phone



Helps them with mindfulness and supports their wellbeing



They feel more empowered



That the apps are safe channels to report abuse



That the apps are accessible and inclusive

WHY SERVICES LOVE OUR APPS



The voice of the child clearly heard within assessment, planning and intervention



Better evidence of children's views



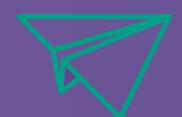
Evidence of improving the quality of direct work



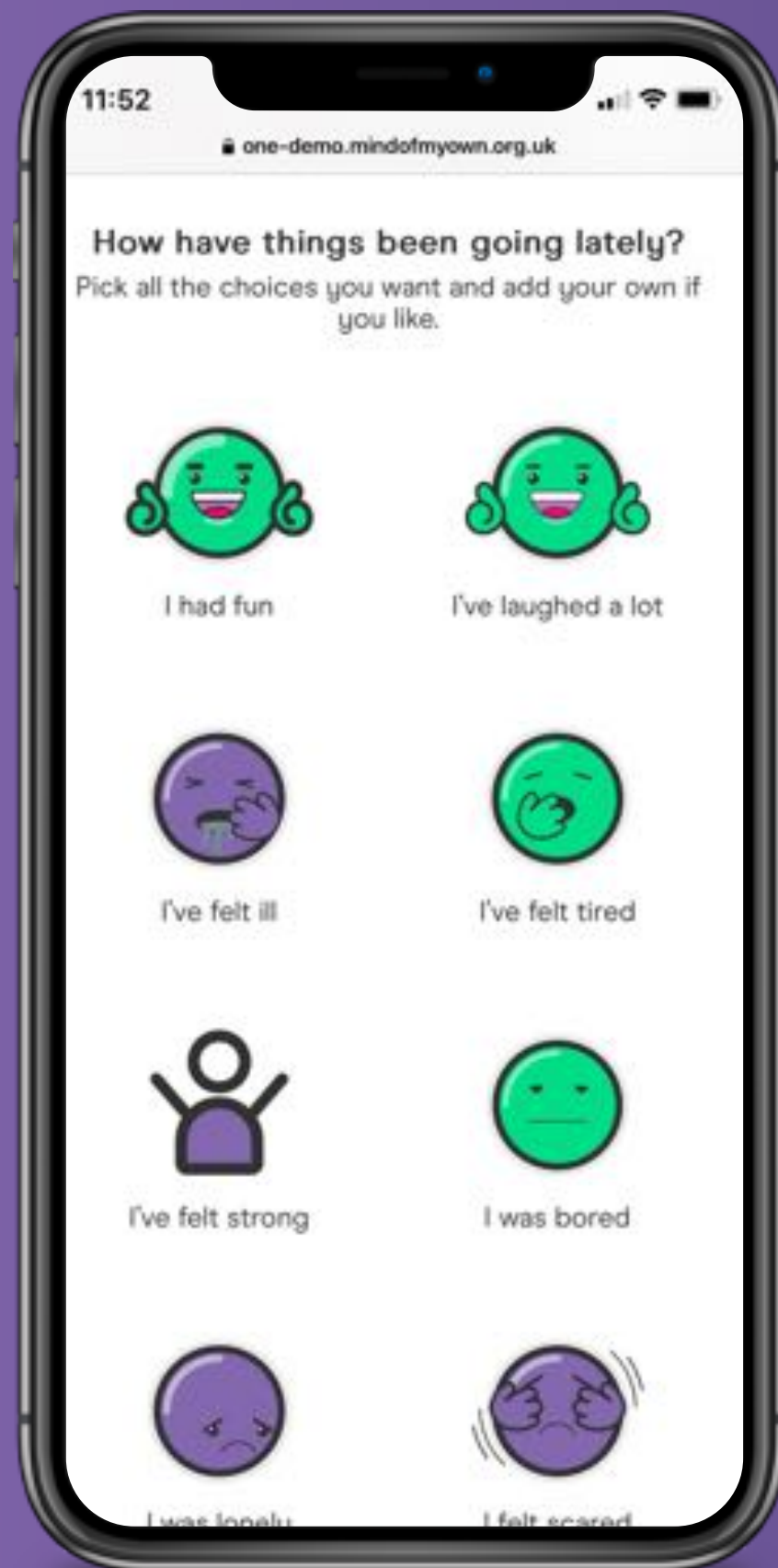
Provides essential data



Earlier reporting of issues



Reduced paperwork – saving time



ONE APP

One is the only **software supporting Article 12 of UNCRC**, enabling young people to communicate their aspirations, opinions and lived experience to participate in decisions about their lives.

It is **strengths-based**, designed and conscientiously **co-produced** with young people for young people, to use when and where suits them. One fosters a positive sense of identity, safety and wellbeing.

WHY USE ONE APP?

- Young people can honestly **communicate** with their trusted adult, using a platform they feel comfortable with
- Prompts conversations and questions that allow practitioners to find out **valuable information** about the young people they work with
- It is a fully child-centred approach to **safeguarding** young people
- Enhances the **relationship** between a young person and their trusted adult

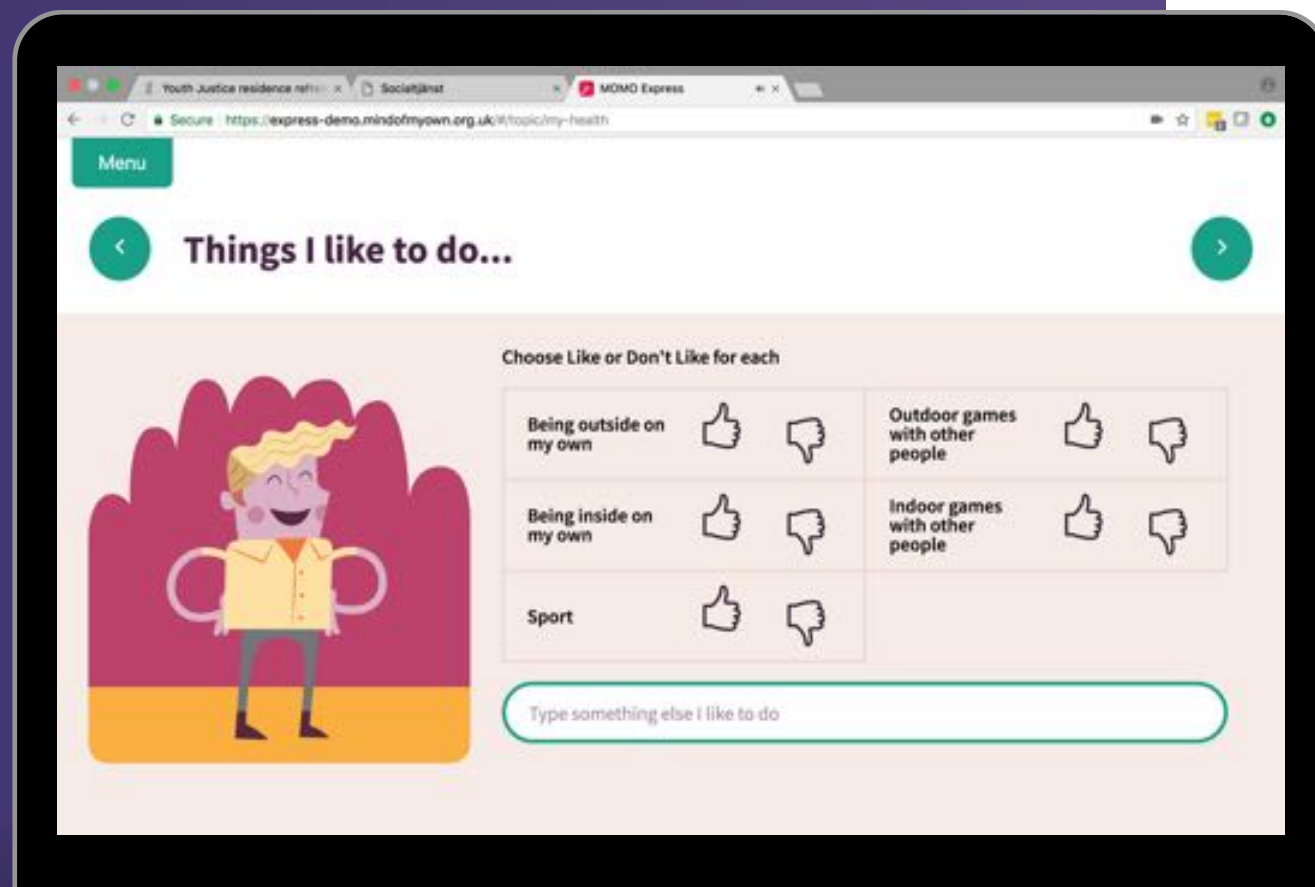


EXPRESS

Express is the only software for **very young children** and those with **additional needs** which actively supports Article 12 of the UNCRC ensuring their views are heard and they participate in decisions about their lives.



FEATURES OF EXPRESS



- Co-produced **bilingual fully accessible** app for younger children and those with additional learning needs
- Enables children's participation in **education, health** and **care plans**
- Creates a **one-page profile** in minutes
- Unique digital tool that helps **safeguard** children

WHY USE EXPRESS?

- Help children **express themselves** – all children's voices are important
- Enhance human contact and direct work
- Evidence a child's **views in their own words**
Help children develop mindfulness and understand their own emotions
- Help **build rapport** and understand the child's lived experience





SHOUT

The SHOUT survey package systematically gathers a synopsis of the views of children, families and professionals. It is a Mind Of My Own digital platform providing off-the-shelf and bespoke surveys and consultations.

SHOUT



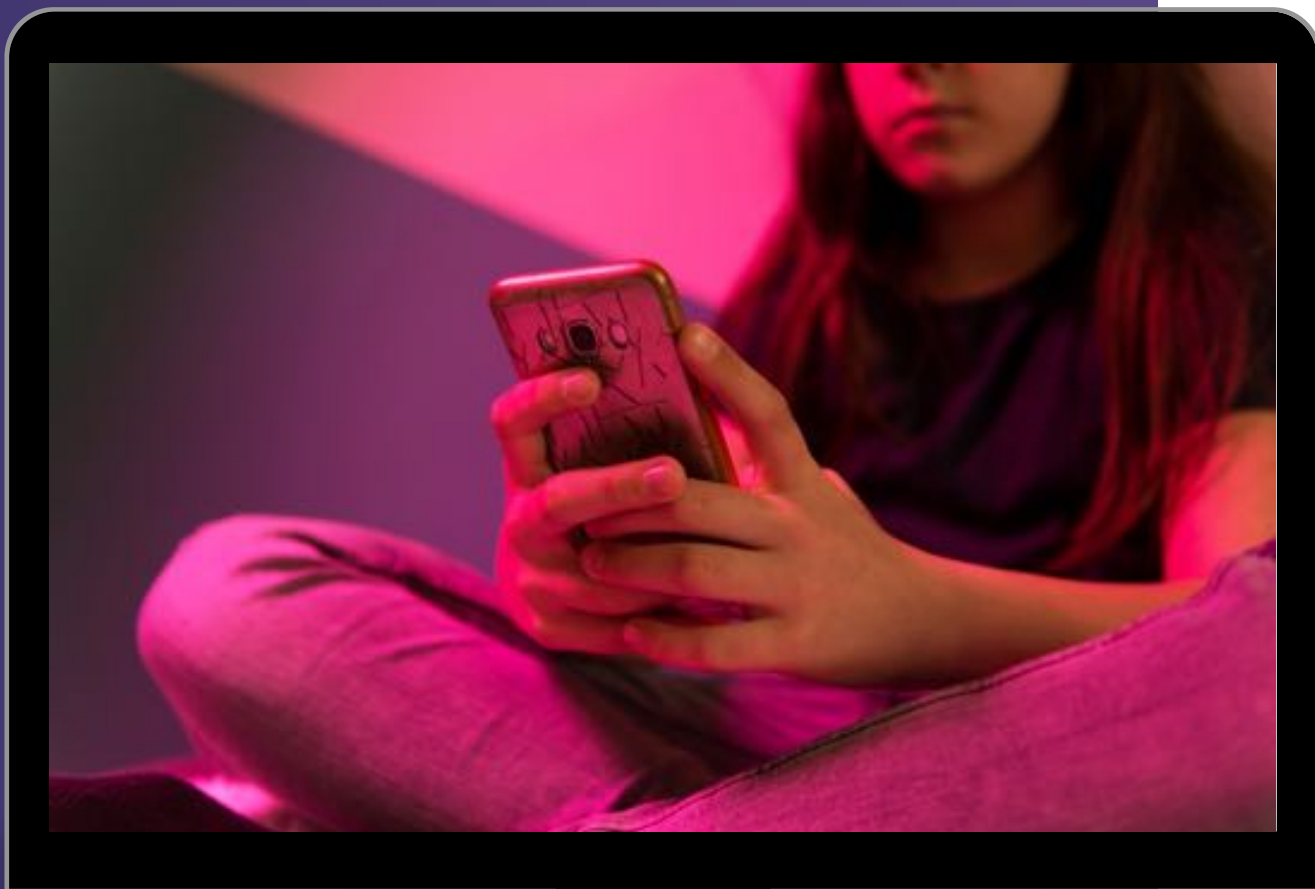
- Organisations can choose from an extensive **bank of questions** on a range of topics such as wellbeing, safety, education, service improvement and much more.
- Has an average **response rate of 72%**
- For every completed study the organisation will receive a report and **analysis of the findings**, as well as the raw results in a data download.
- Each licence gives access to question banks for up to 3 surveys a year. Shout is fully secure and safe and is ISO 27001 compliant.



Xchange

Xchange is genuine child first software, designed to help **youth justice services** understand the whole child and their world, enabling a shift towards pro-social and positive behaviour.

About Xchange



- A unique **strength-based** participation tool that helps Youth Justice services understand the young people they work with to tailor services to fully meet their individual needs.
- A fully **accessible** and **empowering** way for young people to play an active role in decision making and shaping their own future.
- Helps to identify **safeguarding** and risk factors, enabling early intervention.

SERVICE PORTAL



Track, manage, audit

The Service portal is a comprehensive reporting portal where you can track statements, audit performance and monitor trends based on what young people are collectively saying about your service

Recieve authentic data

Mind Of My Own data reflects the real thoughts of young people collected in real time. Data that can revolutionise your decision making, whether at an individual, service or organisational level.

Build resilient services

Rich local data enables you to shape your services based upon intelligence gathered.

WHAT YOUNG PEOPLE TELL US

“I finally found a way to tell someone what was happening to me. I got help.”



Ali, 10 yrs

“I love Mind Of My Own. Mind Of My Own apps have helped me express my feelings. Thank you!”



Thomas, 8 yrs

“I find speaking in this way much easier. It’s revolutionary.”



Kelly, 14 yrs



Get in touch if you would like to **know more** or **receive a quote**

We would love to hear from you

hello@mindofmyown.org.uk | www.mindofmyown.org.uk