

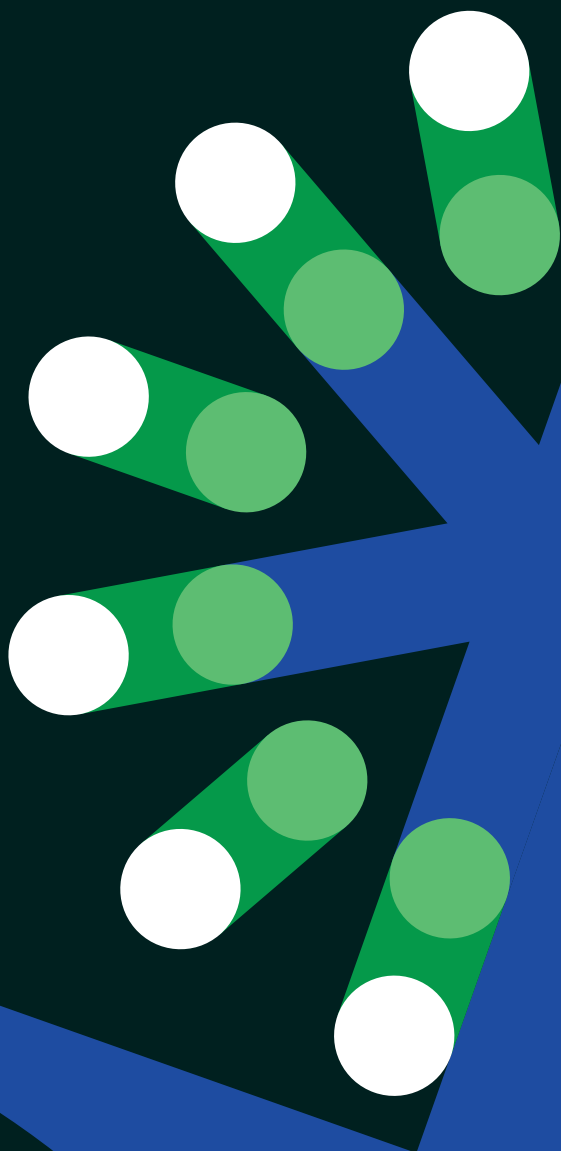
Public Sector Service

How We Can Help

Our Services

Further Information

About and Contact



How we can help

Local Authorities often find it difficult and time-consuming to track down the relatives or other beneficiaries of the estate of someone who has passed away, perhaps while in the care of the Local Authority, or have simply died alone with no identified individual to deal with their affairs.

By partnering with Treethorpe, an independent external firm with the essential skills, experience and resources, you can benefit from a professional and highly cost-effective solution to the challenges faced, including, in some cases, settlement of outstanding debts.

We can help you uphold your social responsibility goals, and remove a considerable burden.

Our services

Treethorpe can support you with a wide range of services:

- Tracing missing beneficiaries where a client has died intestate, providing a full 'end-to-end' service including the administration and distribution of the estate
- Tracing and contacting family members for funeral arrangements and family support
- Preparing a complete genealogy report and family tree, complete with supporting documentation
- Tracing and contacting the individuals believed to be entitled and informing them of their inheritance
- Recovering and realising unclaimed financial assets and property due to these individuals and assisting them to recover their entitlements
- Providing ad-hoc tracing, address validation and certificate ordering both in the UK and abroad
- We can also arrange for the provision of Missing Beneficiary Indemnity Insurance and/or Missing Will Insurance.

Further information



Working in partnership with you

We tailor each of our engagements according to your needs, with mutually agreed objectives. We provide regular updates and reports on progress, and, if requested, we can provide you with secure online access to TCAS, our client record system designed specifically to cater for the demands of this specialised work. This purpose-built IT infrastructure means that our operations are both robust and scalable.



Treethorpe offices

The Canary Wharf office, in London's Docklands financial district, is our registered Head Office and is primarily responsible for asset recovery. Our Cambridge office is the centre for our expanding corporate business and is where the team responsible for our Public Sector Service clients is predominately based.



Dedicated Case Managers

A dedicated Case Manager will be assigned to every case. Their role is to undertake and co-ordinate all research and reporting activity, liaise with the individuals we are able to trace and oversee any required legal processes. Day-to-day direct contact will be maintained through your relationship manager who will keep you informed on progress, and be available to answer any questions you may have along the way.



No success, no fee

In most cases, our fees are contingency-based, meaning that no fees are payable unless we are successful in our work. Even then, our fees are normally deducted from the estate recovered, so there is usually no cost to the Local Authority whatsoever.

Some assignments, such as ad-hoc research reports or family tree validation, for example, are charged on a 'time & materials' basis when the contingency based fee is inappropriate. We offer a highly competitive package, designed to suit the needs of each individual case and each organisation.

About Treethorpe

Treethorpe has a proven track record in the identification and recovery of unclaimed and forgotten assets by locating beneficiaries worldwide.

In recent years, Treethorpe has successfully and increasingly applied this expertise and resources to assisting Local Authorities in identifying and tracing beneficiaries of the estates of their deceased clients.

With its affiliates and associates, Treethorpe can bring together probate researchers, genealogists, and lawyers from the UK and around the world, each of whom has particular experience in the discovery of unclaimed assets, tracing missing heirs and beneficiaries, and in probate and property law.

Treethorpe is registered with the Financial Conduct Authority, and under the Data Protection Act as a Data Controller.

Treethorpe staff are members of the Association of Professional Genealogists.

Corporate Office

9 Caxton House
Broad Street
Cambridge CB23 6JN
T +44 (0) 1954 266030
T +44 (0) 1954 710254

Head Office

40 Beaufort Court
Admirals Way
London E14 9XL
T +44 (0) 20 8914 8317
T +44 (0) 20 8914 8318

treethorpe.com

enquiries@treethorpe.com

Treethorpe Limited is registered in England with number 617 2161, and with registered offices at 44 Beaufort Court, Admirals Way, London E14 9XL. Treethorpe Limited is registered under the Data Protection Act 1998, reference Z119381X, and is registered with the Financial Conduct Authority to provide certain regulated activities, number 535904.

INVESTORS IN PEOPLE®
We invest in people Gold