

Cemetery and Memorials at Enfield Crematorium



Welcome to Enfield Cemetery

Established in 1889, this has been a place of remembrance for generations of local families.

Set within the vibrant London Borough of Enfield, our cemetery has been an important part of the community's heritage for over a century.

The 55-acre cemetery is located on the same site as Enfield Crematorium, offering families burial and cremation services in one place. There are also two beautiful chapels, providing a quiet setting for different types of services.

Services for all faiths and beliefs

We're proud to serve families from all cultural and religious backgrounds. We understand that every community has its own customs and traditions and we work closely with group leaders and families to accommodate their individual wishes and requirements, from burials, through to memorials.

Options for burials and memorials

While many cemeteries across London have limited grave space available, we are able to offer a range of burial and memorial options within our grounds.

As part of a network of cemeteries and crematoria managed by The Crematorium and Memorials Group (CMG), Enfield Cemetery is supported by the care, experience and credibility of a trusted organisation, dedicated to providing lasting places of remembrance across the UK.



Scan the QR code for a virtual tour of the grounds.



About this brochure

This brochure includes just some of the options we offer.

To explore the full range or for more ideas and information, please contact us. We are here to help you create a personal, meaningful tribute.



Grave and memorial options

A thoughtful range of burial and memorial options to suit different wishes, traditions and budgets.

Choosing a grave or memorial is a personal decision, and each option in our range offers its own style and features. These include:

Lawn graves allow for a headstone of choice to be placed at the top of the plot.

Traditional graves allow for full kerb sets (a headstone with a stone edge surrounding the grave) and personalised memorial designs.

Pathside traditional is a traditional grave with a full kerb set (defined memorial surround), in a prominent and distinguished location, beside a path for easier access.

For full details and a price list, please speak to our memorial specialist.

Please note: Memorials, including headstones and kerb sets, are purchased separately from the grave plot.

Pre-purchasing and planning ahead

Many of our graves can be pre-purchased, offering peace of mind that loved ones can be laid to rest together. Planning ahead helps ensure arrangements are made as intended, easing the burden on families and often providing cost savings over time.

Memorials can also be arranged in advance, helping you create a tribute that reflects personal wishes and meaningful memories.

Expert support and guidance

Our memorial specialists are here to guide you through every option and answer any questions you may have. We can arrange a guided tour to help you choose a space and tribute that feels right for you and your loved ones.



A **lawn grave** allows for a headstone to be placed at the top of the burial plot.



A **traditional grave** allows for a full kerb set to mark and protect the grave plot.

Choosing a memorial

Creating a place to pause, remember, and celebrate the life of someone special.

Headstones

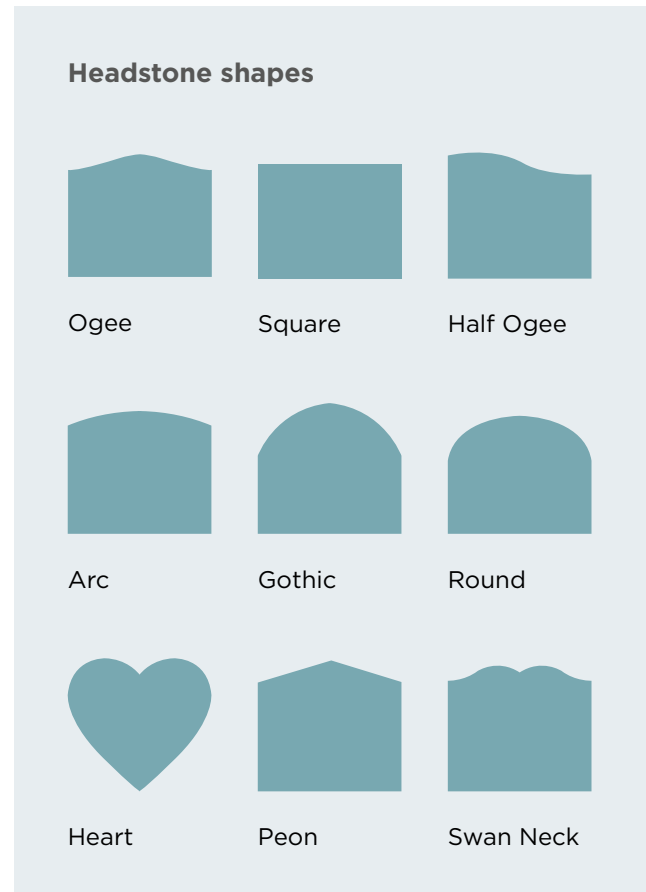
A headstone is an upright monument which marks the burial place of a loved one. They usually display personal information such as a name, and important dates. You can also choose to include a meaningful quote or saying, and, depending on the style of headstone, an image or carving.

Kerb sets

A kerb set outlines a burial plot with a low, rectangular frame that can be filled with stones, chippings, or flowers. With options for headstones and personal detailing, these memorials offer a beautiful, customisable tribute to reflect a loved one's life.

Making it personal

Over the next few pages you'll see just a small sample of what we offer. To explore all the options or discuss an idea you have in mind, contact our memorial specialist. We are always happy to talk things through, and show you examples in person.



Headstones

Headstones are available in a range of shapes, materials and colours. They rest on a base which can include additional decoration, such as a vase for flowers.

Pollington (right) is a black granite memorial with a colourful posy design. This includes two small vases on a square-cut base.

Unlike many cemeteries, we use concrete landings, meaning headstones can be placed without delay so families don't have to wait for the ground to settle. (Lawn graves only.)



Carlton Black & karin granite



Butterleigh Black granite



Thearne English teak granite

A small preview of our headstones

To explore our full range, contact our memorial specialist who will guide and support you.



Roslin Sera grey granite



Birdsall Blue pearl



Bennett English teak granite



Pixley Polished black granite



Somersby White marble



Dodworth Star galaxy granite

Kerb sets

Kerb sets can be fully covered or include an enclosed area enhanced with chippings, pebbles or memorial accompaniments (see Gowthorpe, right).

Coniston (left) is a black granite kerb set which includes a traditionally styled headpiece, square-cut kerbs and two corner posts. In this example, white marble chippings fill the centre.



Holmfirth
Lavender Blue granite



Castleton
Black granite



Helmsley
Evergreen granite

A small preview of our kerb sets

To explore our full range, contact our memorial specialist who will guide and support you.



Wentworth
Steel Grey granite



Harewood
Sera Grey granite



Gowthorpe
Black and Sera grey granite



Crossgates
South African grey granite



Foxglove Grove
Sera Grey granite



Houghton
Black and Sera grey granite

Styles, materials and finishes

Choose from a wide range of styles, materials and colours to create a personal tribute.

Every element can be personalised

The finer details of creating a lasting tribute are just as meaningful as choosing the headstone or kerb set itself.

Every element can be personalised, from the shape and material to the colour and finishing touches, such as chippings or pebbles to enhance a kerb set.

A selection of styles and shapes

Headstones and kerb sets come in a wide selection of styles and shapes, ranging from classic to contemporary designs, ensuring there's a choice to suit every tradition and personal preference.

Choosing materials and colours

Our most popular memorials are crafted from durable materials such as granite, marble and natural stone, available in a variety of colours and finishes. These materials are chosen for their strength, beauty and ability to withstand the elements over time.

Decorative finishes

We offer decorative finishes including recycled glass and natural stone chippings, perfect for complementing kerb sets and adding a distinctive, polished appearance.

Creating a bespoke design

Our skilled craftspeople can create bespoke designs, allowing you to make something unique, personal and memorable.

Please note: We have done our best to reproduce the colours accurately here, but the final colour may vary. We recommend talking to our memorial specialist to choose the colours in person, if you are able to.

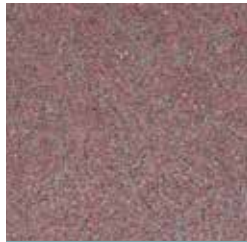
Materials and colours



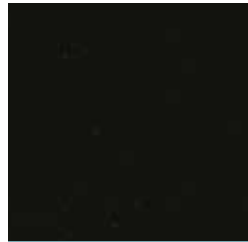
Angolan Black



Cornish De Lank



Imperial Pink



Black Granite



Blue Pearl



Olive Green



Ruby Red



Aurora



White Carrara
marble



Chinese
Evergreen

Chippings and pebbles



Black glass
chippings



Rose quartz
chippings



Turquoise
chippings



White marble
pebbles



Polished
pebbles

This is a small selection of the materials, colours and chippings we offer.
To explore more options or share your ideas, please contact us.

Inscriptions, illustrations, photographs and carvings

Images and inscriptions celebrate the memory of a loved one, as a meaningful tribute for years to come.

We offer guidance on personalised inscriptions, including meaningful dedications, special messages, or quotes that reflect the life, wishes and values of the person they're honouring.

As well as choosing the lettering style for your inscription, you can also add illustrations, photos, badges and insignia to the headstone.

From floral motifs and religious emblems to hobbies, interests or bespoke artwork, these details help make each headstone feel more personal.

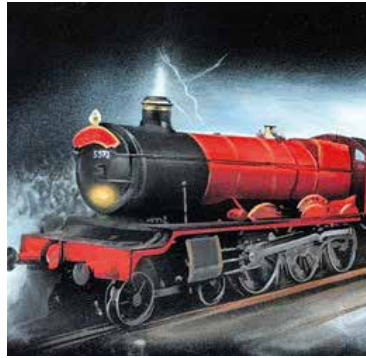
Supporting you with every detail

Book an appointment with our memorial specialist to talk through the different finishes. They are here to guide and support you with information and ideas.



An engraving can add an elegant touch to a headstone.

Explore our wide range of images, from engravings to colourful motifs.





We can accommodate for dedicated benches in some areas of our grounds.



Aurora desk



Blue pearl square vase



Bronze dove

Memorial accompaniments

Personalise their memorial with vases, plaques and more.

We have a range of memorial accompaniments to enhance your loved one's tribute, including vases, traditional plaques, photo plaques, granite books and wedges, tablets and ornaments.

Many of these can be personalised with meaningful inscriptions or images, to complement existing headstones.

A vase can be a thoughtful choice, so family and friends can leave flowers when they visit. We can also accommodate for dedicated benches in some areas of our grounds, as a comfortable spot to sit and reflect.

Finishing touches

For a cohesive and respectful tribute, several of our memorial accompaniments are available in matching materials and finishes. You can then personalise your chosen memorial, as a thoughtful way to honour your loved one.



A kerb set allows you to include an additional plaque with a personal dedication.

Bespoke memorials within our grounds

Our bespoke memorials offer the flexibility to create something unique.

For families seeking a unique and personal tribute, we offer fully bespoke memorials. These can be tailored to a specific design and may include larger-scale features such as monuments, benches or other integrated elements, to provide a distinctive resting place.

Personalised with care

Every bespoke memorial is individually crafted to pay tribute to your loved one and the legacy they leave behind.

From intricate detailing to personalised inscriptions and designs, every element is carefully considered to create a memorial that is both distinctive and respectful.

Our team works closely with families throughout the process, offering guidance and reassurance at every stage. The result is a thoughtfully designed memorial to be appreciated for generations to come.



Bespoke memorials are available in a range of materials and finishes.



Other cemeteries managed by us

We also care for Tottenham and Wood Green Cemeteries.

Both Tottenham and Wood Green Cemeteries offer peaceful resting places for families locally and from further afield. The sites are thoughtfully maintained, providing tranquil surroundings and the flexibility to accommodate different traditions, memorial choices and personal wishes.

Tottenham Cemetery

Established in 1858, Tottenham Cemetery blends historic charm with graceful grounds and notable architecture, including its original chapels.

Wood Green Cemetery

Wood Green Cemetery provides a quiet and respectful setting, with carefully maintained grounds and a sense of privacy throughout. The cemetery offers a range of burial options to accommodate the different wishes and requirements of families. Wood Green is also home to a collection of stunning above-ground vaults, offering an elegant and distinctive alternative to traditional burials. See the following page for more details.



For more information

We're available from Monday
to Friday 8am to 5pm

020 8363 8324

Our above-ground vaults

A secure and elegant resting place, our vaults are designed for both full burials and ashes.

Vaults are specially constructed spaces that provide a secure resting place for either full burials or ashes. While vaults can be designed for both above-ground and below-ground placement, our vaults in East London are positioned above ground.

Why choose a vault?

Vaults honour religious and cultural traditions, meet practical needs and help create a lasting tribute.

These elegant structures serve as a meaningful alternative to traditional burial, offering long-term protection while creating a peaceful space for remembrance.

Planning ahead

Pre-purchasing a vault ensures future peace of mind and allows families to plan ahead together. Our team is here to guide you through the options available.

Vault features

- Designed to hold up to two full burials in secure above-ground concrete chambers.
- Option to have family ashes safely stored within the main vault structure.
- Crafted from elegant blue granite with a sleek inscription panel.



Significant new developments

We're honoured to be adding more burial plots at Enfield Cemetery, offering more choice and flexibility for families. In London, burial space is increasingly limited, and we want to both support families who wish to stay together and create space for individuals plots.

Planning ahead with pre-purchase options

Whether you are planning ahead for yourself or organising arrangements for your family, taking time to consider your options now can offer clarity, comfort, and peace of mind for the future.

Our grounds are carefully maintained and allow for a wide range of memorials, as a meaningful way to honour your loved ones. This development has created more space for remembrance, so visitors can reflect in a peaceful, natural setting.









Private family gardens at Enfield Cemetery

Enfield Cemetery offers private, gated family plots that provide a serene and personal resting place for your loved ones. These exclusive spaces can be fully customised to reflect the wishes and personality of each family, ensuring a peaceful and meaningful environment.

Flexible plot sizes

Our family plots come in a variety of sizes, with the largest able to accommodate up to six burials.

Families have the flexibility to design their plot with features such as benches, personalised memorials, and landscaped elements, creating a tranquil setting that can be cherished for generations.

Whether you are planning for today or for the future, our family plots offer a private sanctuary where remembrance and reflection are at the heart of every design.





Call us for more information
or to arrange a visit

020 8363 8324

Office opening hours

Monday to Friday: 8am to 5pm

Cemetery opening hours

May to September: 8am to 8pm

October to April: 8am to 5pm



Scan the QR code
to leave your review
or read others

Further contact details

General enquiries

enfield.crematorium@thecmg.co.uk

Cemetery enquiries

cemeteries.enfield@thecmg.co.uk

Memorial enquiries

enfield.memorialoffice@thecmg.co.uk

Visit us online

dignityfunerals.co.uk/crematoria-and-cemeteries

Follow us on social media

facebook.com/EnfieldCrematoriumAndCemetery



The Crematorium and Memorial Group is part of Dignity plc. Dignity Funerals Ltd is a company registered in England No. 41598. VAT Reg No. 486 6081 14. Our registered address is 4 King Edwards Court, King Edwards Square, Sutton Coldfield B73 6AP. Phone: 0121 354 1557 Fax: 0121 355 8081